

**SKYTEAM**

ST50-8

ST50-8A

ST110-8

ST110-8A



**PARTS CATALOGUE**



**SKY TEAM CORPORATION LTD.**

1104 CARNIVAL COMMERCIAL BLDG.  
18 JAVA ROAD NORTH POINT HONGKONG  
TEL:00852 25089428  
FAX:00852 25089478  
EMAIL:SKYTEAM\_HK@HOTMAIL.COM  
HTTP://WWW.SKYTEAM.NET.CN  
WWW.SKYTEAM.CN

# 前 言

用户订购零件时请参考本册，若与实车不同之处，以实车为准。如欲知某零部件的名称、件号或装配关系，可按零部件的形状，在有关的插图中查找，可知其装配位置。然后按图上的序号在相应的表格中即可查到零部件的名称、件号和数量。后续更改，不再通知。

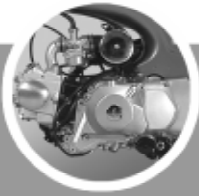
## FOREWORD

Please make reference to this book when you plan to purchase the parts. Any difference against the real motorcycle, please do as per the real. To get information concerning a certain component part, first locate, by its shape, the part in the illustration which show its fitting position, then find out the reference number of that part and look it up the corresponding table where all information about the part are provided, such as the name, part number, quantity and/or its fitting relationship with other parts, Any modifications will not be informed ahead of time.

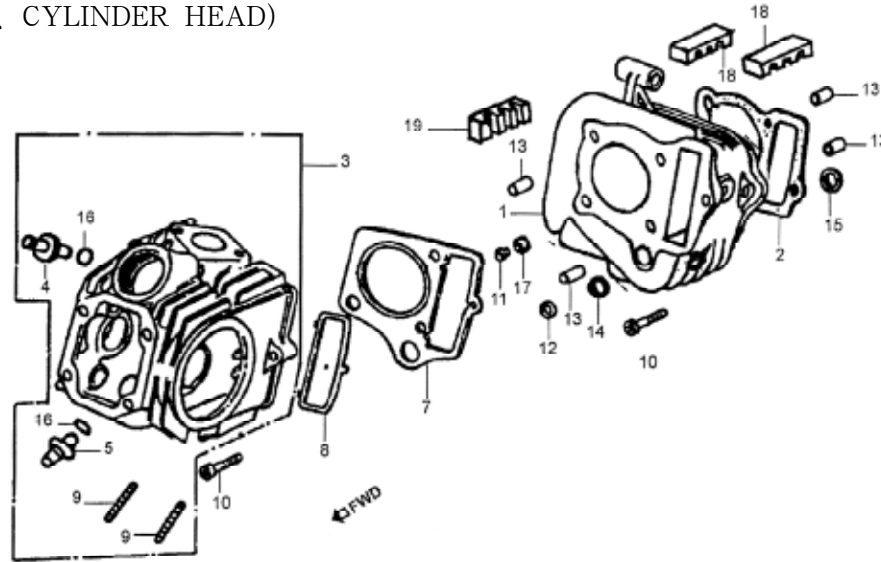
**ST50-8 ST50-8A ST110-8 ST110-8A**



**PARTS CATALOGUE — ENGINE**



E-1 气缸、气缸头 (CYLINDER、CYLINDER HEAD)



| 序号<br>Ref.No. | 零部件代号<br>Part No. | 零部件名称及规格     | Part Name And Standard     | 数量<br>Quantity | 备注<br>Remark |
|---------------|-------------------|--------------|----------------------------|----------------|--------------|
| 1             | LC152FMH-2.01-2   | 气 缸          | Cylinder(110cc)            | 1              |              |
| 1-1           | 139FMA-2.01-2     | 气 缸          | Cylinder(50cc)             | 1              |              |
| 2             | LC152FMH-2.01-1   | 气缸衬垫         | Gasket, cylinder(110cc)    | 1              |              |
| 2-1           | 139FMA-2.01-1     | 气缸衬垫         | Gasket, cylinder(50cc)     | 1              |              |
| 3             | LC152FMH-2.01.04  | 气缸头组合        | Head comp, cylinder(110cc) | 1              |              |
| 3-1           | 139FMA-2.01.04    | 气缸头组合        | Head comp, cylinder(50cc)  | 1              |              |
| 4             | 01.01.01.04       | 进气门导管        | Guide, in. valve           | 1              |              |
| 5             | 01.01.01.05       | 排气门导管        | Guide, ex. valve           | 1              |              |
| 7             | LC152FMH-2.01.01  | 气缸头衬垫        | Gasket, cylinder(110cc)    | 1              |              |
| 7-1           | 139FMA-2.01.01    | 气缸头衬垫        | Gasket, cylinder(50cc)     | 1              |              |
| 8             | 01.01.04.03       | 时规链条腔密封环     | Seal, cam chain chamber    | 1              |              |
| 9             | 01.01.01.07       | 双头螺栓 M6 × 32 | Bolt, stud, 6 × 32         | 2              |              |
| 10            | 01.01.00.30       | 螺栓 M6 × 23   | Bolt, hex, 6 × 23          | 1              |              |
| 11            | 01.01.00.33       | 衬套 9.5mm     | Collar, 9.5mm              | 1              |              |
| 12            | 01.01.00.27       | 垫圈 14.8mm    | Collar, 14.8mm             | 1              |              |

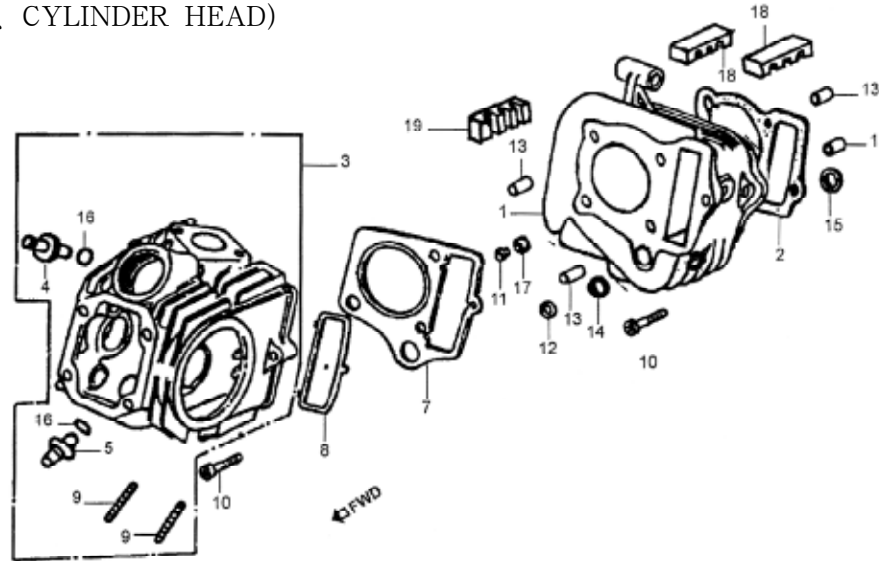


SKYTEAM

ST50-8 ST50-8A ST110-8 ST110-8A

PARTS CATALOGUE — ENGINE

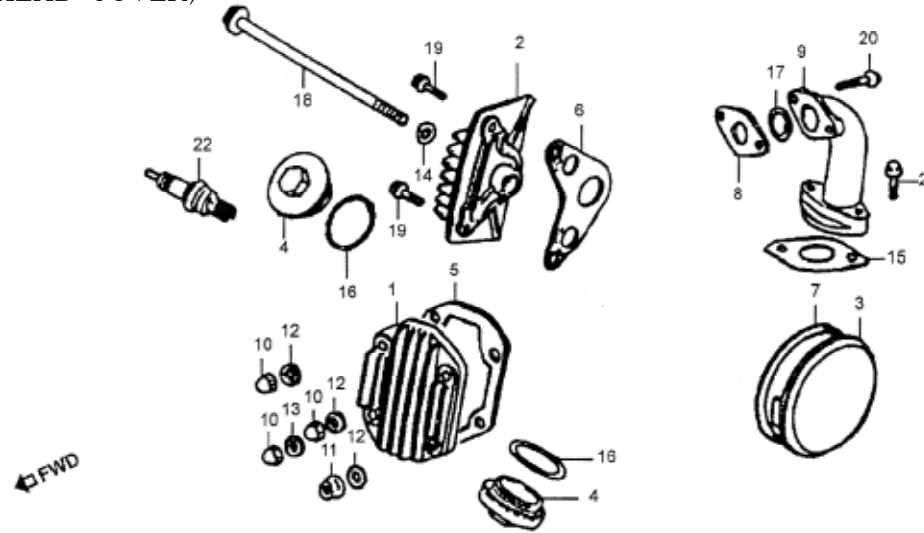
E-1 气缸、气缸头 (CYLINDER、CYLINDER HEAD)



| 序号<br>Ref.No. | 零部件代号<br>Part No. | 零部件名称及规格       | Part Name And Standard      | 数量<br>Quantity | 备注<br>Remark |
|---------------|-------------------|----------------|-----------------------------|----------------|--------------|
| 13            | 01.01.00.32       | 定位销 8 × 14     | Pin, dowel, 8 × 14          | 4              |              |
| 14            | 01.01.00.23       | O型圈 14.5 × 2   | O-ring, 14.5 × 2            | 1              |              |
| 15            | 01.01.00.29       | 矩形圈 11.5 × 2.1 | Packing, rubber, 11.5 × 2.1 | 1              |              |
| 16            | 01.01.01.06       | O型圈 9 × 1.6    | O-ring, 9 × 1.6             | 2              |              |
| 17            | 01.01.00.34       | 矩形圈 9 × 1.35   | Gasket, rubber, 9 × 1.35    | 1              |              |
| 18            | 01.01.00.98       | 减震块A           | Block, vibration reduction  | 2              |              |
| 19            | 01.01.00.99       | 减震块B           | Block, vibration reduction  | 1              |              |



E-2 气缸头盖 (CYLINDER、HEAD COVER)



| 序号<br>Ref.No. | 零部件代号<br>Part No. | 零部件名称及规格 | Part Name And Standard              | 数量<br>Quantity | 备注<br>Remark |
|---------------|-------------------|----------|-------------------------------------|----------------|--------------|
| 1             | LC152FMH-2.01-40  | 气缸头盖     | Cover, cylinder head                | 1              |              |
| 2             | LC152FMH-2.01.05  | 气缸头右盖    | Cover, R. cylinder head side        | 1              |              |
| 3             | 07.01.00.20       | 气缸头左盖    | Cover, L. cylinder head side        | 1              |              |
| 4             | 01.01.00.08       | 气门室盖     | Cap, tappet adjusting hole          | 2              |              |
| 5             | LC152FMH-2.01-39  | 气缸头盖衬垫   | Gasket, cylinder head cover         | 1              |              |
| 6             | LC152FMH-2.01-35  | 气缸头右盖衬垫  | Gasket, R. cylinder head side cover | 1              |              |
| 7             | 01.01.00.21       | 气缸头左盖衬垫  | Gasket, L. cylinder head side cover | 1              |              |
| 8             | 01.01.00.04       | 进气管隔热垫   | Insulate(110cc)                     | 1              |              |
| 8-1           | 01.01.00.04-1     | 进气管隔热垫   | Insulate(50cc)                      | 1              |              |
| 9             | 02.01.00.05       | 进气管      | Pipe, in.(110cc)                    | 1              |              |
| 9-1           | 02.01.00.05-1     | 进气管      | Pipe, in.(50cc)                     | 1              |              |
| 10            | 01.01.00.43       | 盖形螺母 M6  | Nut, cap, 6mm                       | 3              |              |
| 11            | 01.01.00.43       | 盘形螺母 M6  | Nut, flange, 6mm                    | 1              |              |
| 12            | 01.01.00.41       | 垫圈 6mm   | Washer, sealing, 6mm                | 3              |              |
| 13            | 01.01.00.42       | 垫圈 A6mm  | Washer A, sealing, 6mm              | 1              |              |

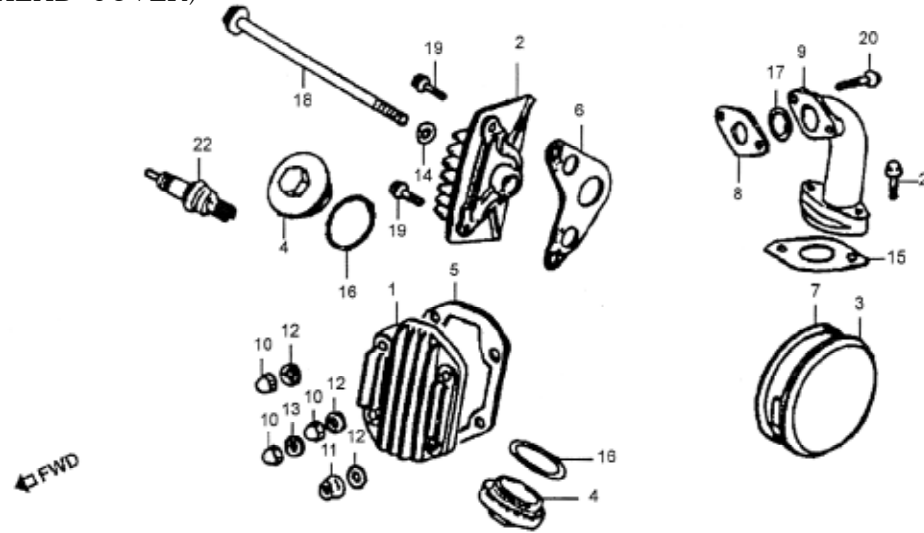


SKYTEAM

ST50-8 ST50-8A ST110-8 ST110-8A

PARTS CATALOGUE — ENGINE

E-2 气缸头盖 (CYLINDER, HEAD COVER)



| 序号<br>Ref.No. | 零部件代号<br>Part No. | 零部件名称及规格       | Part Name And Standard   | 数量<br>Quantity | 备注<br>Remark |
|---------------|-------------------|----------------|--------------------------|----------------|--------------|
| 14            | 01.01.00.36       | 垫圈 6.5mm       | Washer sealing, 6.5mm    | 1              |              |
| 15            | 01.01.00.06       | 衬垫             | Gasket, pipe, IN.(110cc) | 1              |              |
| 15-1          | 01.01.00.06-1     | 衬垫             | Gasket, pipe, IN.(50cc)  | 1              |              |
| 16            | 01.01.00.07       | O形圈 30.8 × 3.2 | O-ring, 30.8 × 3.2       | 2              |              |
| 17            | 01.01.00.03       | o形圈 25 × 2.4   | O-ring, 25 × 2.4         | 1              |              |
| 18            | 01.01.00.38       | 凸缘螺栓 M6 × 110  | Block, flange, 6 × 110   | 1              |              |
| 19            | LC152FMH-2.01-2   | 凸形螺栓 M6 × 20   | Bolt flange, 6 × 20      | 2              |              |
| 20            | LC152FMH-2.01-1   | 螺栓 M6 × 22     | Bolt hex, 6 × 22         | 2              |              |
| 21            | LC152FMH-2.01.04  | 凸形螺栓 M6 × 28   | Bolt, flange, 6 × 28     | 2              |              |
| 22            | 01.01.01.04       | 火花塞 1137       | Plug, spark(1137)        | 1              |              |



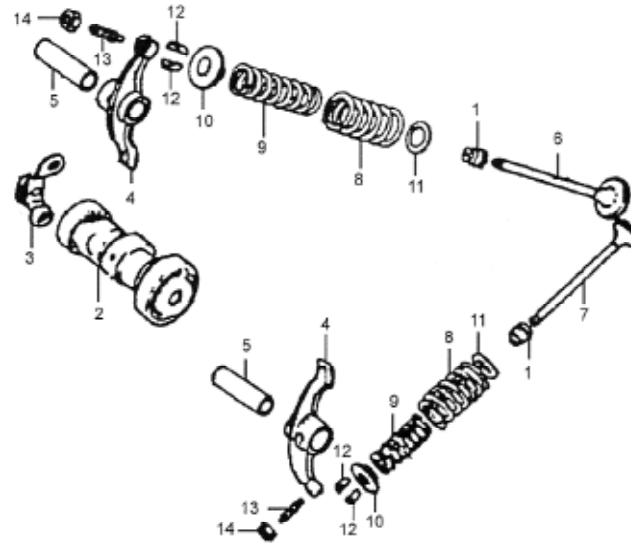


SKYTEAM

ST50-8 ST50-8A ST110-8 ST110-8A

PARTS CATALOGUE — ENGINE

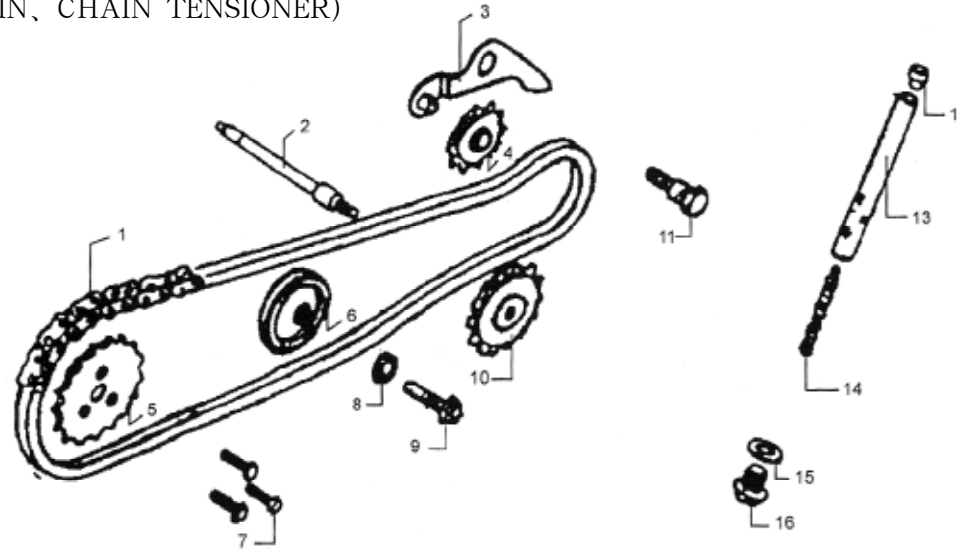
E-3 气门组 (CAMSHAFT VALVE)



| 序号<br>Ref.No. | 零部件代号<br>Part No. | 零部件名称及规格 | Part Name And Standard | 数量<br>Quantity | 备注<br>Remark |
|---------------|-------------------|----------|------------------------|----------------|--------------|
| 1             | 01.01.05.00       | 气门油封     | Seal, valve stem       | 2              |              |
| 2             | 07.01.03.00       | 凸轮轴组件    | Cam shaft comp         | 1              |              |
| 3             | 07.01.00.45       | 止动板      | Valve stopper          | 1              |              |
| 4             | 01.01.00.11       | 气门摇臂     | Rocker arm             | 2              |              |
| 5             | 01.01.00.12       | 摇臂轴      | Shaft rocker arm       | 2              |              |
| 6             | 01.01.00.13       | 进气门      | Valve, inlet(110cc)    | 1              |              |
| 6-1           | 01.01.00.13-1     | 进气门      | Valve, inlet(50cc)     | 1              |              |
| 7             | 01.01.00.14       | 排气门      | Valve, exhaust(110cc)  | 1              |              |
| 7-1           | 01.01.00.14-1     | 排气门      | Valve, exhaust(50cc)   | 1              |              |
| 8             | 01.01.11.16       | 气门外弹簧    | Spring, valve outer    | 2              |              |
| 9             | 01.01.00.17       | 气门内弹簧    | Spring, valve inner    | 2              |              |
| 10            | 01.01.00.18       | 气门内外弹簧座  | Retainer               | 2              |              |
| 11            | 01.01.00.15       | 气门外弹簧座   | Seat outer             | 2              |              |
| 12            | 01.01.00.19       | 气门锁夹     | Cotter, valve          | 4              |              |
| 13            | 01.01.00.10       | 气门间隙调整螺钉 | Screw adjusting        | 2              |              |
| 14            | 01.01.00.09       | 气门间隙锁紧螺母 | Nut tappet adjusting   | 2              |              |



E-4 链条及张紧装置 (CHAIN、CHAIN TENSIONER)



| 序号<br>Ref.No. | 零部件代号<br>Part No. | 零部件名称及规格     | Part Name And Standard             | 数量<br>Quantity | 备注<br>Remark |
|---------------|-------------------|--------------|------------------------------------|----------------|--------------|
| 1             | 01.01.00.44       | 正时链条         | Chain, cam                         | 1              |              |
| 2             | 01.04.00.07       | 油泵链轮轴        | Spindle, cam chain guide sprocket  | 1              |              |
| 3             | 01.04.09.00       | 张紧臂          | Arm comp, cam chain tensioner      | 1              |              |
| 4             | 01.04.10.00       | 张紧滚轮         | Roller, cam chain tensioner        | 1              |              |
| 5             | 01.01.00.22       | 正时从动链轮       | Sprocket, cam                      | 1              |              |
| 6             | 01.01.06.01       | 导向滚轮         | Roller comp, cam chain guide       | 1              |              |
| 7             | 01.01.00.23       | 螺栓 M5 × 12   | Bolt, knock 5 × 12                 | 3              |              |
| 8             | 01.01.00.25       | 垫圈 8mm       | Washer, sealing 8mm                | 1              |              |
| 9             | 01.01.00.24       | 导向滚轮销轴       | Pin, cam chain guide roller        | 1              |              |
| 10            | 01.04.05.00       | 油泵链轮         | Sprocket, cam chain guide          | 1              |              |
| 11            | 01.04.00.25       | 张紧臂芯轴        | Pivot, cam chain tensioner         | 1              |              |
| 12            | 01.04.00.16       | 堵头           | Head, cam chain tensioner push rod | 1              |              |
| 13            | 01.04.07.00       | 张紧杆          | Rod comp, cam chain tensioner push | 1              |              |
| 14            | 01.04.00.15       | 张紧杆弹簧        | Spring, cam chain tensioner        | 1              |              |
| 15            | 01.04.00.14       | 垫圈 14mm      | Washer, sealing 14mm               | 1              |              |
| 16            | 01.04.00.13       | 螺塞 M14 × 1.5 | Bolt, sealing 14 × 1.5             | 1              |              |

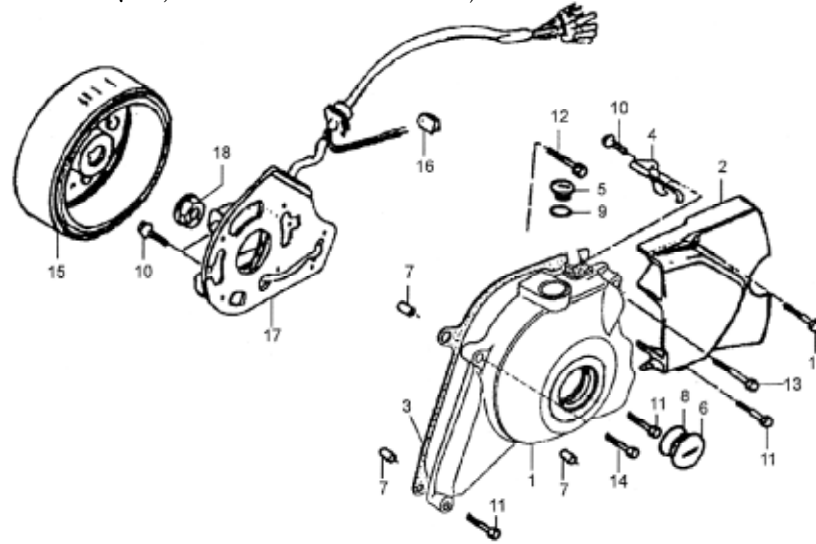


SKYTEAM

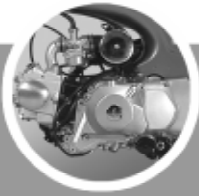
ST50-8 ST50-8A ST110-8 ST110-8A

PARTS CATALOGUE — ENGINE

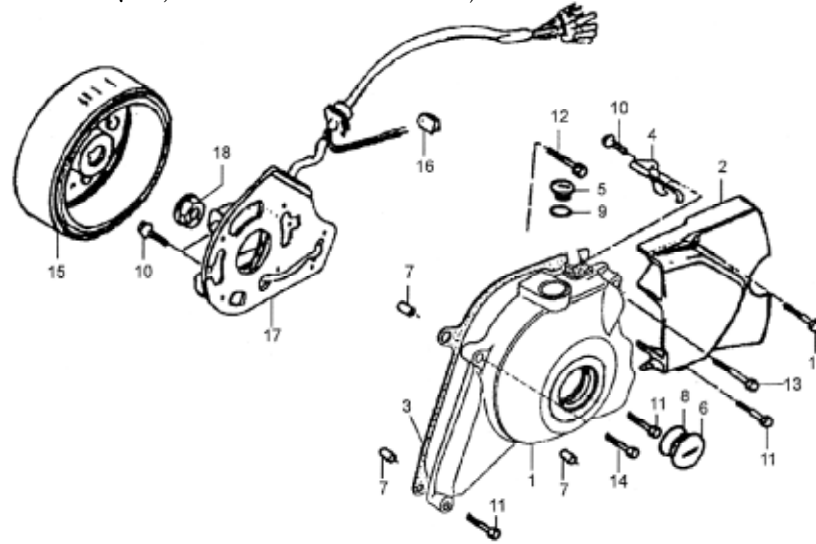
E-5 磁电机、左曲轴箱盖 (GENERATOR, L, CRANKCASE COVER)



| 序号<br>Ref.No. | 零部件代号<br>Part No. | 零部件名称及规格        | Part Name And Standard | 数量<br>Quantity | 备注<br>Remark |
|---------------|-------------------|-----------------|------------------------|----------------|--------------|
| 1             | 02.02.06.00       | 左曲轴箱前盖          | Cover, L crankcase     | 1              |              |
| 2             | 02.02.00.01       | 左曲轴箱后盖          | Cover, L Crankcase, RR | 1              |              |
| 3             | 02.02.06.06       | 左曲轴箱盖密封垫        | Gasket, L grankcase    | 1              |              |
| 4             | 02.09.00.01       | 磁电机线夹           | Clamper, wire harness  | 1              |              |
| 5             | 02.02.06.04       | 视孔盖 B           | Cap B                  | 1              |              |
| 6             | 02.02.06.02       | 视孔盖 A           | Cap A                  | 1              |              |
| 7             | 01.01.00.31       | 定位销 8 × 12      | Pin dowel 8x12         | 2              |              |
| 8             | 02.02.06.03       | O 形圈 27 × 2.0   | O-ring 27 × 2.0        | 1              |              |
| 9             | 02.02.06.05       | O 形圈 13.8 × 2.5 | O-ring 13.8 × 2.5      | 1              |              |
| 10            | GB18-86           | 凸缘螺栓 M6 × 16    | Bolt, flange 6 × 16    | 3              |              |
| 11            | 01.00.00.01       | 凸缘螺栓 M6 × 28    | Bolt, flange 6 × 28    | 3              |              |
| 12            | 02.00.00.03       | 凸缘螺栓 M6 × 32    | Bolt, flange 6 × 32    | 1              |              |
| 13            | 01.04.00.21       | 凸缘螺栓 M6 × 50    | Bolt, flange 6 × 50    | 1              |              |
| 14            | 02.00.00.02       | 凸缘螺栓 M6 × 70    | Bolt, flange 6 × 70    | 1              |              |
| 15            | 02.09.07.01       | 飞轮              | Flywheel COMP          | 1              |              |



E-5 磁电机、左曲轴箱盖 (GENERATOR, L, CRANKCASE COVER)



| 序号<br>Ref.No. | 零部件代号<br>Part No. | 零部件名称及规格 | Part Name And Standard     | 数量<br>Quantity | 备注<br>Remark |
|---------------|-------------------|----------|----------------------------|----------------|--------------|
| 16            | 02.09.01.99       | 空档开关索环   | Rubber,neutral switch cord | 1              |              |
| 17            | 02.09.01.00       | 定子组件     | Stator comp                | 1              |              |
| 18            | 02.09.01.98       | 凸缘螺母M10  | Nut, flange 10mm           | 1              |              |

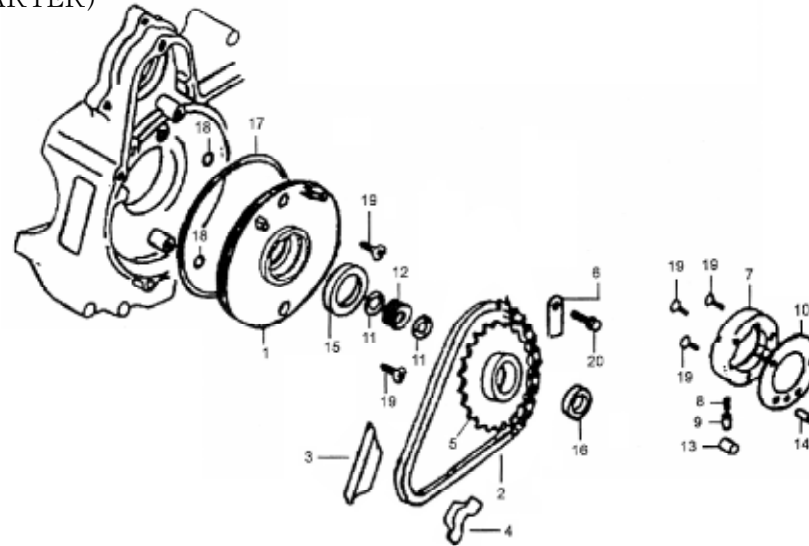


SKYTEAM

ST50-8 ST50-8A ST110-8 ST110-8A

PARTS CATALOGUE — ENGINE

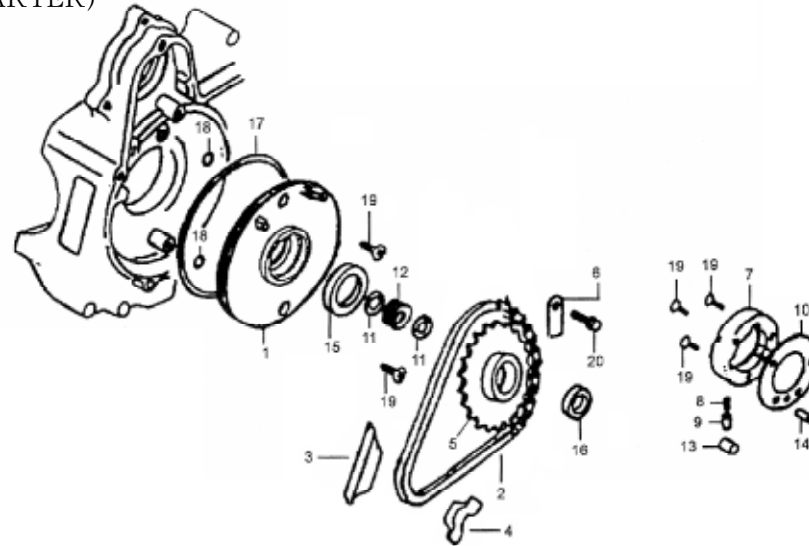
E-6 电起动装置 (ELECTRIC STARTER)



| 序号<br>Ref.No. | 零部件代号<br>Part No.      | 零部件名称及规格          | Part Name And Standard      | 数量<br>Quantity | 备注<br>Remark |
|---------------|------------------------|-------------------|-----------------------------|----------------|--------------|
| 1             | 02.04.15.01            | 隔油盘               | Plate, oil separator        | 1              |              |
| 2             | 02.00.04.00            | 起动链条              | Start chain                 | 1              |              |
| 3             | 02.04.02.04            | 起动链条导向板           | Plate, guide chain          | 1              |              |
| 4             | 02.04.02.05            | 起动链条护板            | Plate, protect chain        | 1              |              |
| 5             | 02.00.01.00            | 起动链轮组件            | Start chain comp            | 1              |              |
| 6             | 02.07.01.10            | 起动链轮定位板           | Plate, set chain            | 1              |              |
| 7             | 02.00.03.00            | 起动离合器壳体组件         | Starter clutch outer assy   | 1              |              |
| 8             | 02.00.03.01            | 离合器滚柱弹簧           | Spring, clutch roller       | 3              |              |
| 9             | 02.00.03.02            | 弹簧顶销              | Pin, spring                 | 3              |              |
| 10            | 02.00.03.08            | 起动离合器侧板           | Side plate, starter clutch  | 1              |              |
| 11            | 9243/23.1              | 档圈 23mm           | Circlip 23mm                | 2              |              |
| 12            | 8x10III+3/30 GB4661-84 | 滚针轴承 19 × 23 × 13 | Needle bearing 19 × 23 × 13 | 1              |              |
| 13            | 02.00.03.03            | 离合器滚柱 10 × 10     | Clutch roller 10 × 10       | 3              |              |
| 14            | 02.00.03.04            | 销轴 5 × 11.8       | Pin 5 × 11.8                | 1              |              |
| 15            | 02.04.15.02            | 油封 30 × 42 × 4.5  | Oil seal 30 × 42 × 4.5      | 1              |              |



E-6 电起动装置 (ELECTRIC STARTER)



| 序号<br>Ref.No. | 零部件代号<br>Part No. | 零部件名称及规格         | Part Name And Standard | 数量<br>Quantity | 备注<br>Remark |
|---------------|-------------------|------------------|------------------------|----------------|--------------|
| 16            | 01.09.02.00       | 油封 18.9 × 28 × 5 | Oil seal 18.9 × 28 × 5 | 1              |              |
| 17            | 01.09.01.02       | O 形圈 107 × 2     | O-ring 107 × 2         | 1              |              |
| 18            | 01.04.00.08       | O 形圈 6 × 1.7     | O-ring 6 × 1.7         | 2              |              |
| 19            | GB819-86          | 螺钉 M6 × 16       | Screw 6 × 16           | 3              |              |
| 20            | GB818-86          | 螺钉 M6 × 10       | Screw 6 × 10           | 1              |              |



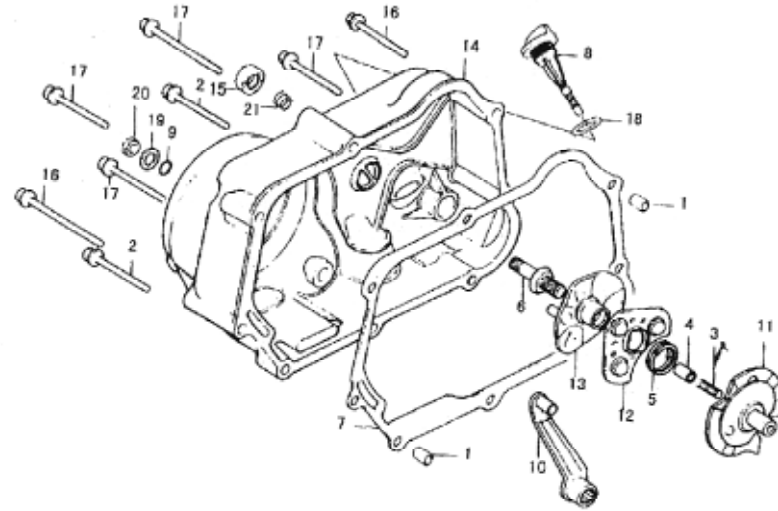
SKYTEAM

ST50-8 ST50-8A ST110-8 ST110-8A

SENI-AUTOMATIC CLUTCH(50cc)

PARTS CATALOGUE — ENGINE

E-7 右边盖 (RIGHT COVER)



| 序号<br>Ref.No. | 零部件代号<br>Part No. | 零部件名称及规格 | Part Name And Standard     | 数量<br>Quantity | 备注<br>Remark |
|---------------|-------------------|----------|----------------------------|----------------|--------------|
| 1             | 100027            | 定位衬套     | DOWEL PIN                  | 2              |              |
| 2             | M6 × 65 HwMHWZn   | 六角垫圈螺栓   | SCREW                      | 2              |              |
| 3             | 130013            | 回转体中心弹簧  | SPRING                     | 1              |              |
| 4             | 130014            | 回转体中心套   | ROTART BODY CENTER BUSH    | 1              |              |
| 5             | 130015            | 分离弹簧     | SPRING                     | 1              |              |
| 6             | 130016            | 分座螺钉     | SCREW                      | 1              |              |
| 7             | 130017C           | 右盖密封垫    | R.CASE COVER GASKET        | 1              |              |
| 8             | 130018            | 油标盖      | OIL LEVER                  | 1              |              |
| 9             | 130022            | O形封严圈    | GAUGE                      | 1              |              |
| 10            | 130500            | 拨杆组件     | LEVER COMP                 | 1              |              |
| 11            | 130600            | 拨杆回转体组件  | LEVER AND ROTARY BODY COMP | 1              |              |
| 12            | 130700            | 滚珠架组件    | BALL-RACE COMP             | 1              |              |
| 13            | 130800            | 回转体支座组件  | SUPPORT COMP,ROTARY BODY   | 1              |              |
| 14            | 130900            | 机匣右盖组件   | R,CASE COVER COMP          | 1              |              |
| 15            | 130100            | 传动轴端皮碗   | OIL SEAL                   | 1              |              |



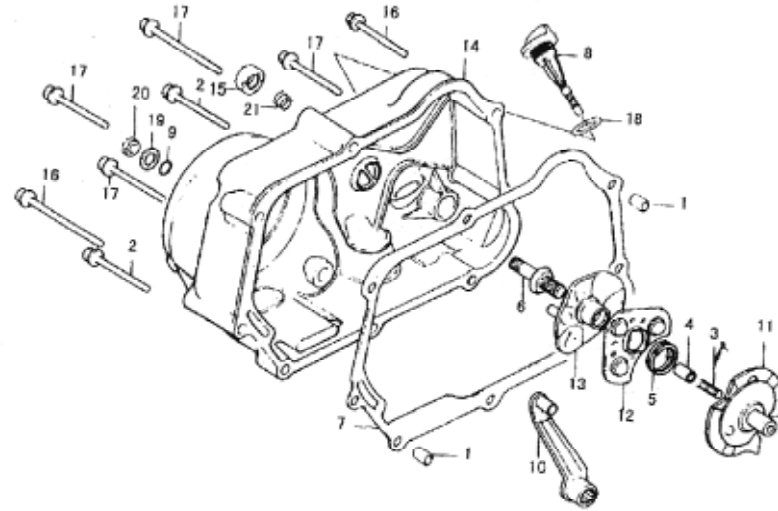
SKYTEAM

ST50-8 ST50-8A ST110-8 ST110-8A

SEMI-AUTOMATIC CLUTCH(50cc)

PARTS CATALOGUE — ENGINE

E-7 右边盖 (RIGHT COVER)



| 序号<br>Ref.No. | 零部件代号<br>Part No.     | 零部件名称及规格 | Part Name And Standard | 数量<br>Quantity | 备注<br>Remark |
|---------------|-----------------------|----------|------------------------|----------------|--------------|
| 16            | M6 × 35 HwMHWZn       | 六角垫圈螺栓   | BOLT                   | 2              |              |
| 17            | M6 × 40 HwMHWZn       | 六角垫圈螺栓   | BOLT                   | 4              |              |
| 18            | 7D17-J7-18.5-2.6      | O形封严圈    | O-RING                 | 1              |              |
| 19            | GB848-85 8-140HV-Zn.D | 小垫圈      | WASHER                 | 1              |              |
| 20            | GB6170-86 M8-8-Zn.D   | 六角螺母     | NUT                    | 1              |              |





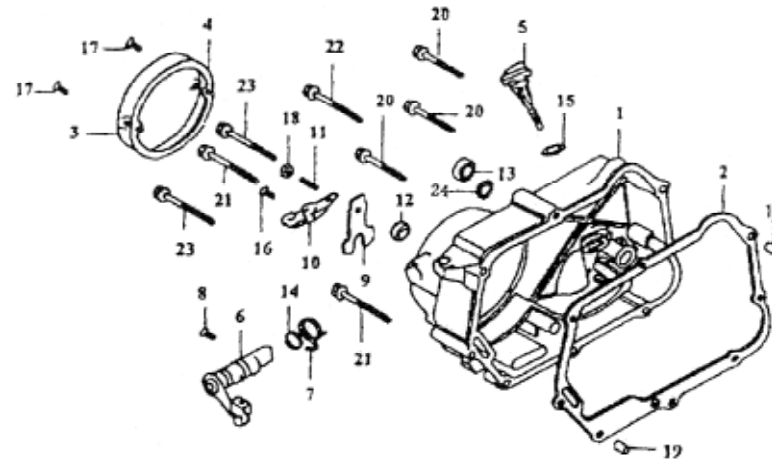
SKYTEAM

ST50-8 ST50-8A ST110-8 ST110-8A

MANUAL CLUTCH(50cc, 110cc)

PARTS CATALOGUE — ENGINE

E-8 右边盖 (RIGHT COVER)



| 序号<br>Ref.No. | 零部件代号<br>Part No. | 零部件名称及规格 | Part Name And Standard  | 数量<br>Quantity | 备注<br>Remark |
|---------------|-------------------|----------|-------------------------|----------------|--------------|
| 1             | 130900G           | 机匣右盖组件   | RIGHT COVER, CRANKCASE  | 1              |              |
| 2             | 130017C           | 右盖密封垫    | GASKET                  | 1              |              |
| 3             | 130030G           | 盖子       | COVER                   | 1              |              |
| 4             | 130031GC          | 垫子       | GASKET                  | 1              |              |
| 5             | 130018G           | 油标盖      | OIL LEVEL GAUGE         | 1              |              |
| 6             | 130032G           | 离合器拉杆组件  | CLUTCH LEVEL COMP       | 1              |              |
| 7             | 130033G           | 回位弹簧     | RETURN SPRING           | 1              |              |
| 8             | 130034G           | 销钉       | PIN                     | 1              |              |
| 9             | 130036G           | 离合器调整板   | ADJUSTING PLATE, CLUTCH | 1              |              |
| 10            | 130037G           | 离合器压板    | LIFTER SETTING PLATE    | 1              |              |
| 11            | 130038G           | 离合器调整螺钉  | CLUTCH ADJUSTING SCREW  | 1              |              |
| 12            | 130040G           | 封严皮碗     | OIL SEAL                | 1              |              |
| 13            | 131000            | 起动轴端皮碗   | OIL SEAL                | 1              |              |
| 14            | 7D17-J7-14-1.5    | R型密封圈    | O-RING                  | 1              |              |
| 15            | 7D17-J7-18.5-2.6  | R型密封圈    | O-RING                  | 1              |              |



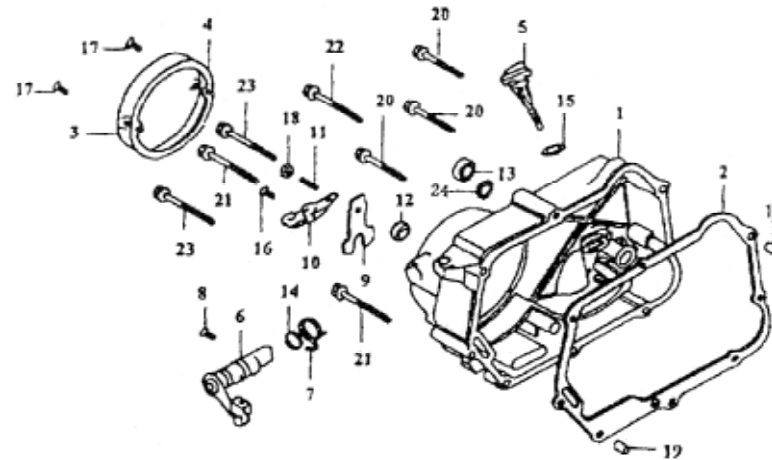
SKYTEAM

ST50-8 ST50-8A ST110-8 ST110-8A

MANUAL CLUTCH(50cc, 110cc)

PARTS CATALOGUE — ENGINE

E-8 右边盖 (RIGHT COVER)



| 序号<br>Ref.No. | 零部件代号<br>Part No.     | 零部件名称及规格 | Part Name And Standard | 数量<br>Quantity | 备注<br>Remark |
|---------------|-----------------------|----------|------------------------|----------------|--------------|
| 16            | GB819-85 M6 × 16-Zn.D | 十字槽沉头螺钉  | SCREW                  | 1              |              |
| 17            | GB819-85 M5 × 12-Zn.D | 十字槽沉头螺钉  | SCREW                  | 2              |              |
| 18            | GB170-86 M6 × 8-Zn.D  | 六角螺母     | HEX NUT                | 1              |              |
| 19            | 100027                | 定位衬套     | DOWEL PIN              | 2              |              |
| 20            | 7DM28-M6 × 40         | 六角法兰面螺栓  | HEX BOLT               | 3              |              |
| 21            | 7DM28-M6 × 35         | 六角法兰面螺栓  | HEX BOLT               | 2              |              |
| 22            | 7DM28-M6 × 65         | 六角法兰面螺栓  | HEX BOLT               | 1              |              |
| 23            | 7DM28-M6 × 55         | 六角法兰面螺栓  | HEX BOLT               | 2              |              |
| 24            | 100057                | 油封弹簧     | SPRING                 | 1              |              |



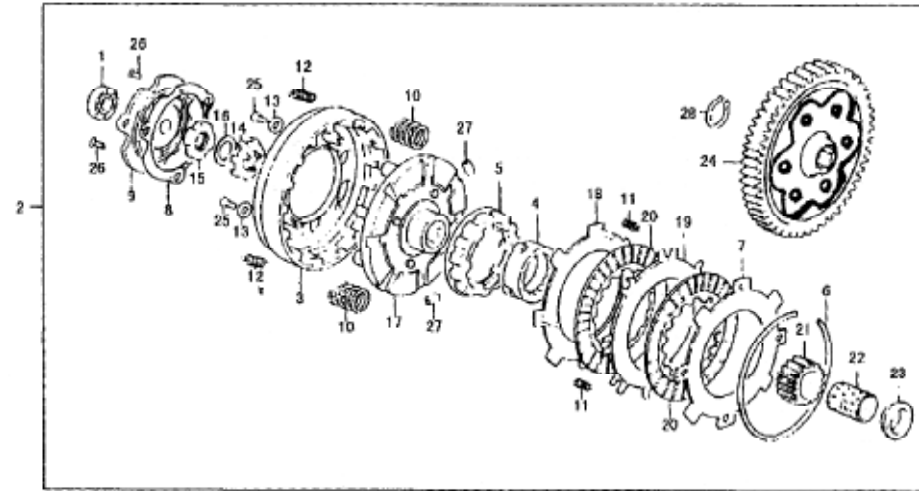
SKYTEAM

ST50-8 ST50-8A ST110-8 ST110-8A

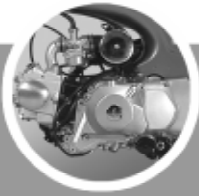
SENI-AUTOMATIC CLUTCH(50cc)

PARTS CATALOGUE — ENGINE

E-9 离合器 (CLUTCH)



| 序号<br>Ref.No. | 零部件代号<br>Part No. | 零部件名称及规格 | Part Name And Standard | 数量<br>Quantity | 备注<br>Remark |
|---------------|-------------------|----------|------------------------|----------------|--------------|
| 1             | 100 GB276-64      | 滚珠轴承     | BEARING                | 1              |              |
| 2             | 130000-1C         | 离合器组件    | CLUTCH ASSY            | 1              |              |
| 3             | 130001            | 离合器外壳    | CLUTCH SHELL           | 1              |              |
| 4             | 130002            | 传动轴外套    | CLUTCH OUTER           | 1              |              |
| 5             | 130003            | 传动轴外套    | CLUTCH CENTER          | 1              |              |
| 6             | 130004            | 卡圈       | SETRING                | 1              |              |
| 7             | 130005            | 摩擦前垫圈    | WASHER                 | 1              |              |
| 8             | 130007            | 密封垫      | GASKET                 | 1              |              |
| 9             | 130008            | 前盖       | COVER                  | 1              |              |
| 10            | 130009            | 压紧弹簧     | SPRING                 | 2              |              |
| 11            | 130010            | 自松弹簧     | SPRING                 | 2              |              |
| 12            | 130011            | 缓冲弹簧     | SPRING                 | 2              |              |
| 13            | 130012            | 垫片       | WASHER                 | 2              |              |
| 14            | 130019            | 锁片       | LOCKER                 | 1              |              |
| 15            | 130020            | 圆扁螺母     | NUT                    | 1              |              |



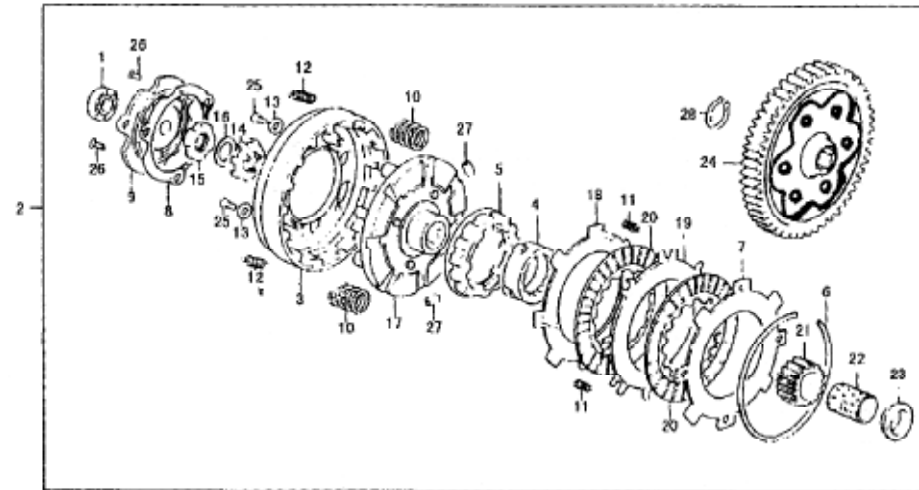
SKYTEAM

ST50-8 ST50-8A ST110-8 ST110-8A

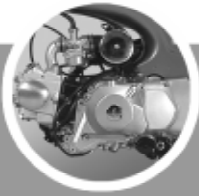
SENI-AUTOMATIC CLUTCH(50cc)

PARTS CATALOGUE — ENGINE

E-9 离合器 (CLUTCH)



| 序号<br>Ref.No. | 零部件代号<br>Part No.        | 零部件名称及规格 | Part Name And Standard     | 数量<br>Quantity | 备注<br>Remark |
|---------------|--------------------------|----------|----------------------------|----------------|--------------|
| 16            | 130021                   | 碟形垫圈     | SAUCER WASHER              | 1              |              |
| 17            | 130100                   | 离合器架组件   | CLUTCH HOLDER              | 1              |              |
| 18            | 130200                   | 摩擦后垫片组件  | WASHER                     | 1              |              |
| 19            | 130300A                  | 外摩擦片组件   | OUTER DISK CLUTCH FRICTION | 1              |              |
| 20            | 130400A                  | 内摩擦片组件   | CLUTCH FRICTION            | 2              |              |
| 21            | 140001                   | 曲轴齿圈     | PRIMARY DRIVE GEAR         | 1              |              |
| 22            | 140002                   | 齿圈衬套     | GUIDE                      | 1              |              |
| 23            | 140003                   | 端面支撑面    | COLLAR                     | 1              |              |
| 24            | 140100                   | 中间齿轮组合   | PRIMARY DRIVEN GEAR        | 1              |              |
| 25            | M5 × 10 GB818-76-35-Zn.D | 十字槽平圆头螺钉 | SCREW                      | 2              |              |
| 26            | M5 × 10 GB819-76-35-Zn.D | 十字槽沉头螺钉  | SCREW                      | 2              |              |
| 27            | 8 × 10III+3/30 GB4661-84 | 圆柱滚子     | ROLLER                     | 2              |              |
| 28            | 150003                   | 卡圈       | SETRING                    | 1              |              |



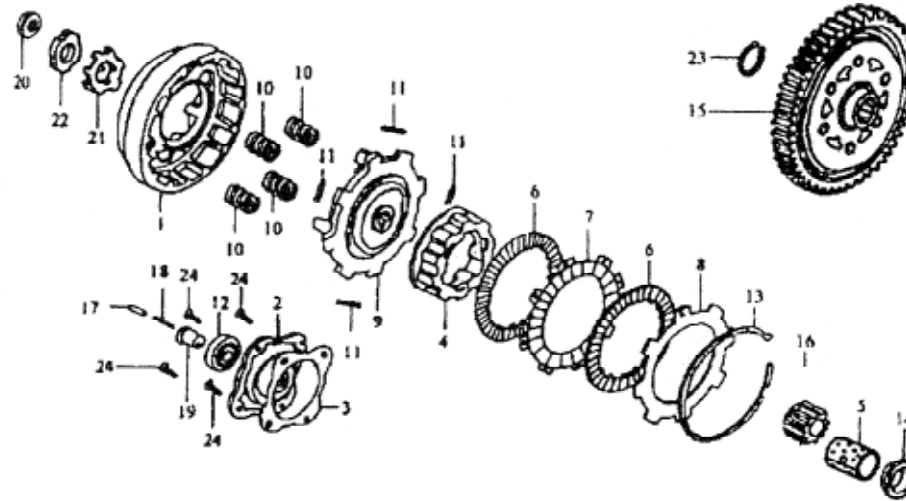
SKYTEAM

ST50-8 ST50-8A ST110-8 ST110-8A

MANUAL CLUTCH(50cc, 110cc)

PARTS CATALOGUE — ENGINE

E-10 离合器 (CLUTCH)



| 序号<br>Ref.No. | 零部件代号<br>Part No. | 零部件名称及规格 | Part Name And Standard     | 数量<br>Quantity | 备注<br>Remark |
|---------------|-------------------|----------|----------------------------|----------------|--------------|
| 1             | 147FM2B-6007      | 离合器壳体    | CLUTCH OUTER               | 1              |              |
| 2             | 147FM2B-6009      | 前盖       | COVER,CLUTCH OUTER         | 1              |              |
| 3             | 147FM2B-6008C     | 密封垫      | GASKET                     | 1              |              |
| 4             | 147FM2B-6001      | 花键齿套     | CLUTCH CENTER              | 1              |              |
| 5             | 140002            | 齿圆衬套     | PRIMARY DRIVER GEAR GUIDE  | 1              |              |
| 6             | 147FM2B-6100      | 摩擦片组件    | CLUTCH FRICTION ASSY       | 2              |              |
| 7             | 147FM2B-6104      | 摩擦片下板    | OUTER DISK,CLUTCH FRICTION | 1              |              |
| 8             | 147FM2B-6102      | 摩擦片上板    | INNER DISK,CLUTCH FRICTION | 1              |              |
| 9             | 147FM2B-6105      | 离合器支架    | CLUTCH FRAME               | 1              |              |
| 10            | 21201-04E         | 压紧弹簧     | SPRING                     | 4              |              |
| 11            | 147FM2B-6105      | 缓冲弹簧     | SPRING                     | 4              |              |
| 12            | 100GB276-82       | 滚珠轴承     | BEARING                    | 1              |              |
| 13            | 147FM2B-6003      | 卡圈       | SET RING                   | 1              |              |
| 14            | 140003            | 端面支承圈    | COLLAR                     | 1              |              |
| 15            | 140100            | 中间轮组合    | GEAR,PRIMARY DRIVEN        | 1              |              |



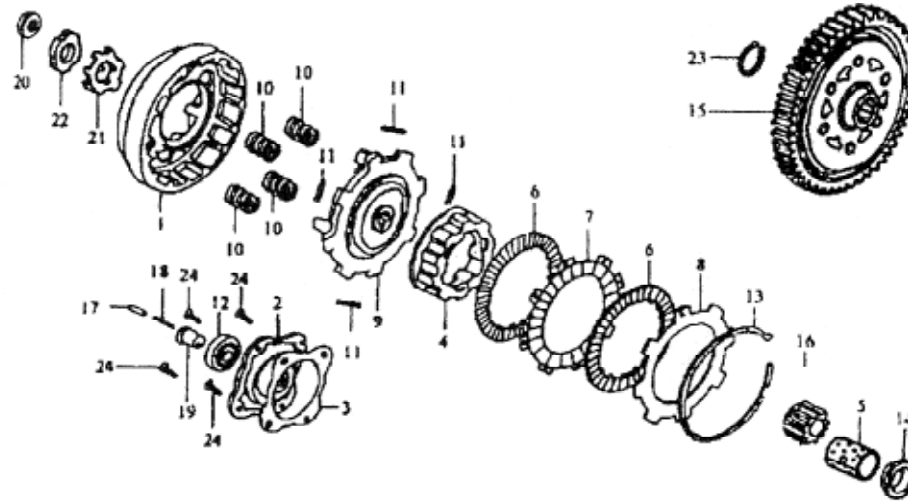
SKYTEAM

ST50-8 ST50-8A ST110-8 ST110-8A

MANUAL CLUTCH(50cc, 110cc)

PARTS CATALOGUE — ENGINE

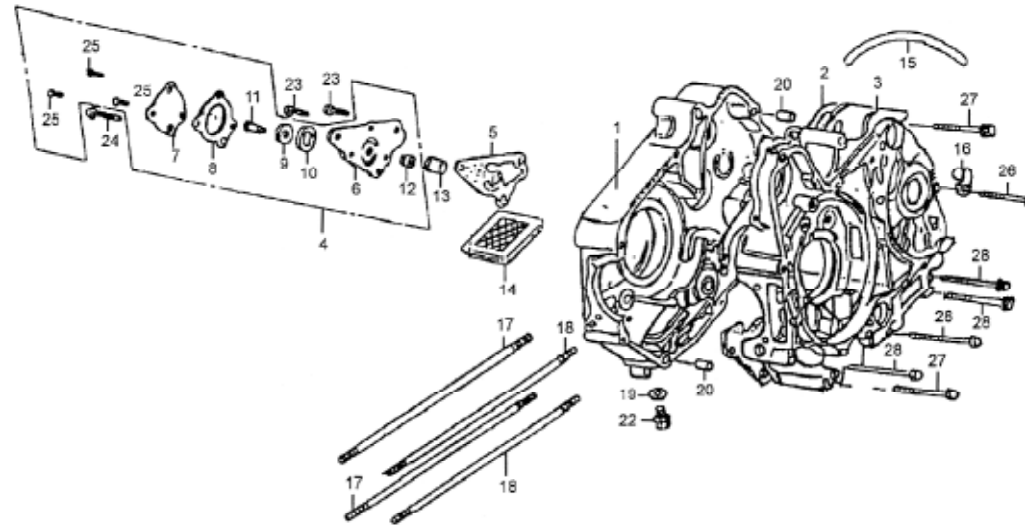
E-10 离合器 (CLUTCH)



| 序号<br>Ref.No. | 零部件代号<br>Part No. | 零部件名称及规格 | Part Name And Standard | 数量<br>Quantity | 备注<br>Remark |
|---------------|-------------------|----------|------------------------|----------------|--------------|
| 16            | 140001G           | 曲轴齿圈     | GEAR,PRIMARY DRIVE     | 1              |              |
| 17            | 147FM2B-6013      | 回转体中心套   | SLEEVE                 | 1              |              |
| 18            | 147FM2B-6012      | 回转体中心弹簧  | SPRING                 | 1              |              |
| 19            | 147FM2B-6011      | 滑油路导套    | OIL THOUGH GUIDE       | 1              |              |
| 20            | 147FM2B-6014      | 圆扁螺母     | NUT                    | 1              |              |
| 21            | 147FM2B-6016      | 锁片       | LOCK WASHER            | 1              |              |
| 22            | 147FM2B-6015      | 碟形垫圈     | SAUCER WASHER          | 1              |              |
| 23            | 150003            | 卡圈       | SET RING               | 1              |              |
| 24            | 147FM2B-6018      | 十字槽沉头螺钉  | SCREW                  | 4              |              |



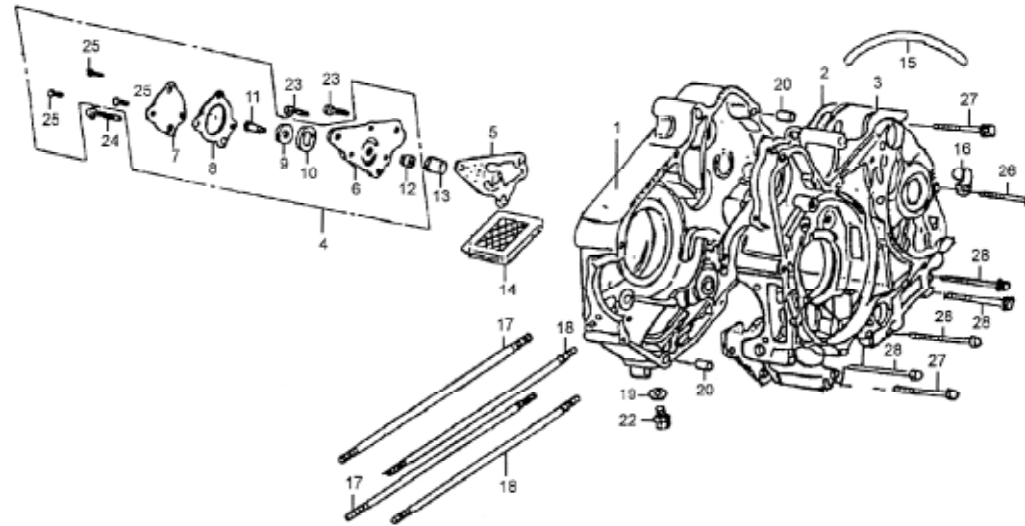
E-11 曲轴箱、机油泵 (CRANKCASE、OIL PUMP)



| 序号<br>Ref.No. | 零部件代号<br>Part No.   | 零部件名称及规格 | Part Name And Standard | 数量<br>Quantity | 备注<br>Remark |
|---------------|---------------------|----------|------------------------|----------------|--------------|
| 1             | 101102C(110cc)      | 右曲轴箱     | Crankcase comp, R,     | 1              |              |
| 1-1           | 101102C-1(50cc)     | 右曲轴箱     | Crankcase comp, R,     | 1              |              |
| 2             | 01.04.00.01(110cc)  | 曲轴箱衬垫    | Gasket, crankcase      | 1              |              |
| 2-1           | 01.04.00.01-1(50cc) | 曲轴箱衬垫    | Gasket, crankcase      | 1              |              |
| 3             | 101002C(110cc)      | 左曲轴箱     | Crankcase comp, L,     | 1              |              |
| 3-1           | 101002C-1(50cc)     | 左曲轴箱     | Crankcase comp, L,     | 1              |              |
| 4             | 01.04.06.00         | 机油泵      | Pump assy, oil         | 1              |              |
| 5             | 01.04.00.10         | 机油泵衬垫    | Gasket, oil pump body  | 1              |              |
| 6             | 01.04.06.01         | 机油泵体     | Body, oil pump         | 1              |              |
| 7             | 01.04.06.04         | 机油泵盖     | Cover, oil pump        | 1              |              |
| 8             | 01.04.06.05         | 机油泵盖衬垫   | Gasket, oil pump cover | 1              |              |
| 9             | 01.04.06.06         | 机油泵内转子   | Rotor, oil pump, inner | 1              |              |
| 10            | 01.04.06.07         | 机油泵外转子   | Rotor, oil pump, outer | 1              |              |
| 11            | 01.04.06.03         | 机油泵轴     | Driveshaft, oil pump   | 1              |              |
| 12            | 01.04.06.02         | 机油泵轴套    | Pin, oil pump lock     | 1              |              |



E-11 曲轴箱、机油泵 (CRANKCASE, OIL PUMP)



| 序号<br>Ref.No. | 零部件代号<br>Part No. | 零部件名称及规格       | Part Name And Standard | 数量<br>Quantity | 备注<br>Remark |
|---------------|-------------------|----------------|------------------------|----------------|--------------|
| 13            | 01.04.00.09       | 机油泵链轮轴套        | Pivot, oil pump        | 1              |              |
| 14            | 01.04.04.00       | 机油过滤网组件        | Screen, oil filter     | 1              |              |
| 15            | 01.04.00.24       | 通气管            | Tube, breather         | 1              |              |
| 16            | 01.04.00.28       | 管夹             | Clamper, tube          | 1              |              |
| 17            | 01.04.00.07       | 双头螺栓 A         | Bolt A, cylinder stud  | 2              |              |
| 18            | 01.04.00.26       | 双头螺栓 B         | Bolt B, cylinder stud  | 2              |              |
| 19            | 01.04.00.12       | 垫圈             | Washer, drain plug     | 1              |              |
| 20            | 01.04.00.18       | 定位销 10 × 14    | Pin dowel, 10x14       | 2              |              |
| 22            | 01.04.00.11       | 放油螺塞 M12 × 1.5 | Bolt drain 12x1.5      | 1              |              |
| 23            | Gb818-86          | 螺钉 M6 × 16     | Screw, 6x16            | 2              |              |
| 24            | BG818-86          | 螺钉 M6 × 22     | Screw, 6x22            | 1              |              |
| 25            | GB818-86          | 螺钉 M5 × 10     | Screw, psn, 6x10       | 3              |              |
| 26            | 01.04.00.21       | 凸缘螺栓 M6 × 50   | Bolt, flange 6x50      | 1              |              |
| 27            | 01.04.00.19       | 凸缘螺栓 M6 × 60   | Bolt, flange 6x60      | 2              |              |
| 28            | 01.04.00.17       | 凸缘螺栓 M6 × 65   | Bolt, flange 6x65      | 4              |              |



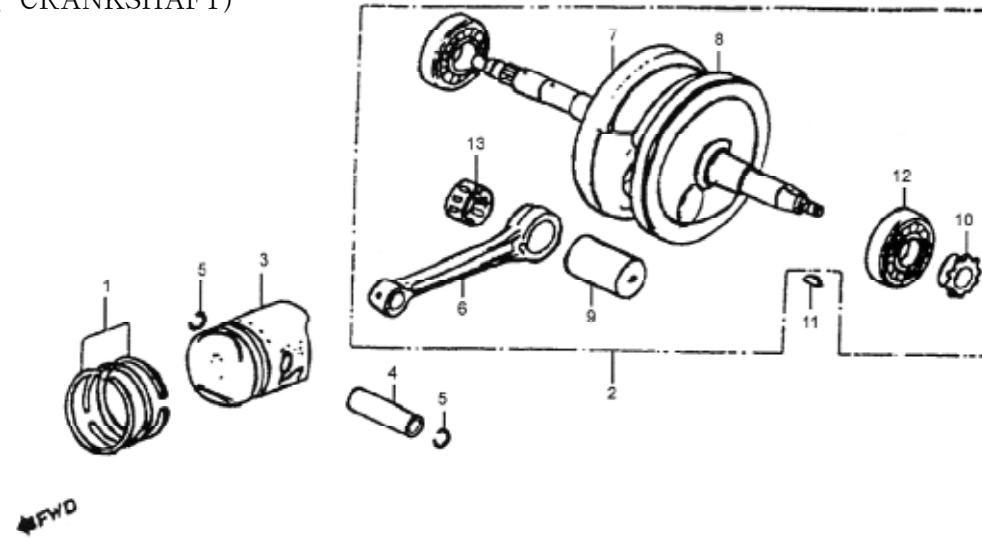


SKYTEAM

ST50-8 ST50-8A ST110-8 ST110-8A

PARTS CATALOGUE — ENGINE

E-12 活塞、曲轴 (PISTON、CRANKSHAFT)



| 序号<br>Ref.No. | 零部件代号<br>Part No.               | 零部件名称及规格 | Part Name And Standard | 数量<br>Quantity | 备注<br>Remark |
|---------------|---------------------------------|----------|------------------------|----------------|--------------|
| 1             | 05.03.01.08<br>.09<br>.10       | 活塞环组     | Ring set,piston(110cc) | 1              |              |
| 1-1           | 05.03.01.08-1<br>.09-1<br>.10-1 | 活塞环组     | Ring set,piston(50cc)  | 1              |              |
| 2             | 07.03.01.00                     | 曲柄连杆     | Cranshaft comp(110cc)  | 1              |              |
| 2-1           | 07.03.01.00-1                   | 曲柄连杆     | Cranshaft comp(50cc)   | 1              |              |
| 3             | 05.03.01.09                     | 活塞       | Piston(110cc)          | 1              |              |
| 3-1           | 05.03.01.09-1                   | 活塞       | Piston(50cc)           | 1              |              |
| 4             | 01.03.01.05                     | 活塞销      | Pin, piston(110cc)     | 1              |              |
| 4-1           | 01.03.01.05-1                   | 活塞销      | Pin, piston(50cc)      | 1              |              |
| 5             | 01.03.01.04                     | 活塞销挡圈    | Clip, piston pin       | 2              |              |
| 6             | 05.03.01.06                     | 连杆       | Rod, connecting(110cc) | 1              |              |
| 6-1           | 05.03.01.06-1                   | 连杆       | Rod, connecting(50cc)  | 1              |              |

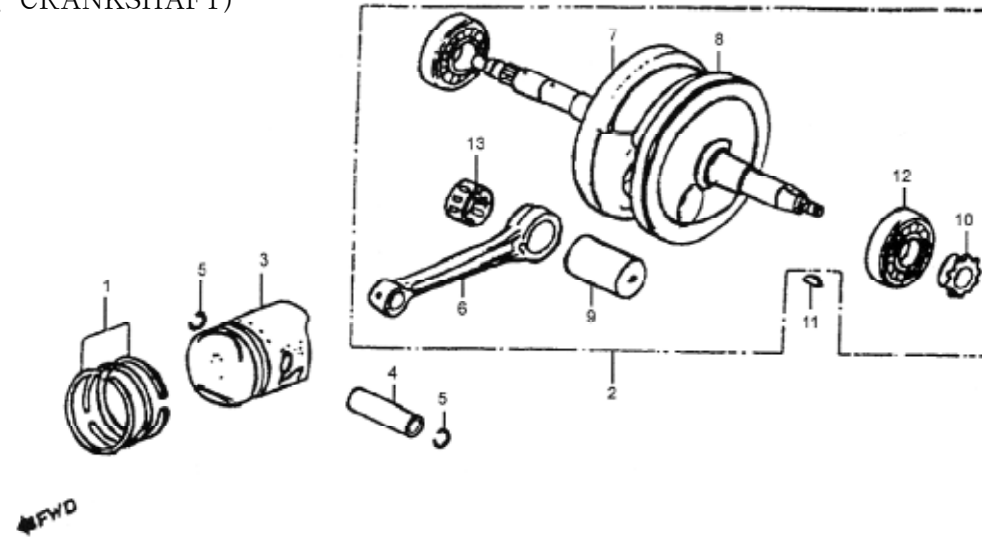


SKYTEAM

ST50-8 ST50-8A ST110-8 ST110-8A

PARTS CATALOGUE — ENGINE

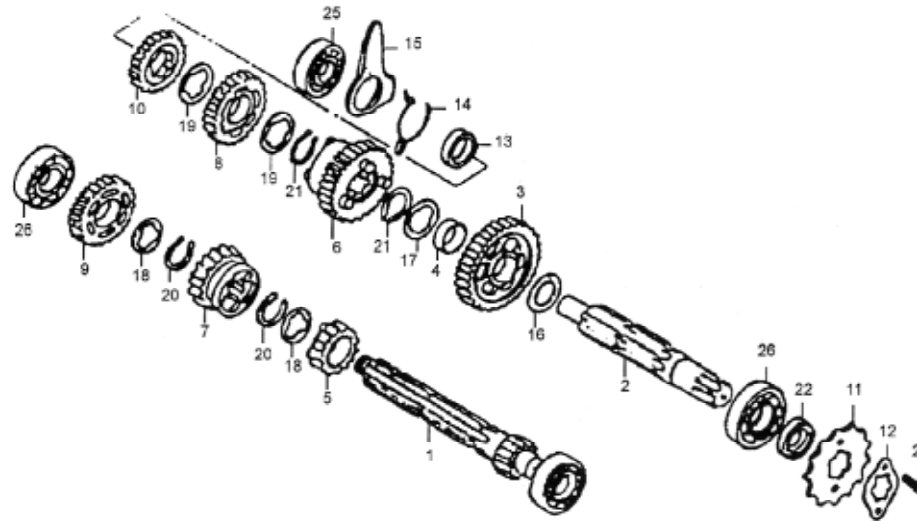
E-12 活塞、曲轴 (PISTON、CRANKSHAFT)



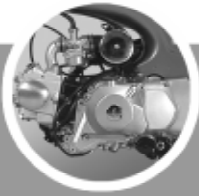
| 序号<br>Ref.No. | 零部件代号<br>Part No. | 零部件名称及规格 | Part Name And Standard           | 数量<br>Quantity | 备注<br>Remark |
|---------------|-------------------|----------|----------------------------------|----------------|--------------|
| 7             | 07.03.01.11       | 右曲轴组件    | Crankshaft, R,(110cc)            | 1              |              |
| 7-1           | 07.03.01.11-1     | 右曲轴组件    | Crankshaft, R,(50cc)             | 1              |              |
| 8             | 07.03.01.02       | 左曲轴      | Crankshaft, L,(110cc)            | 1              |              |
| 8-1           | 07.03.01.02-1     | 左曲轴      | Crankshaft, L,(50cc)             | 1              |              |
| 9             | 05.03.01.10       | 曲轴销      | Pin, crank(110cc)                | 1              |              |
| 9-1           | 05.03.01.10-1     | 曲轴销      | Pin, crank(50cc)                 | 1              |              |
| 10            | 01.03.01.03       | 正时主动链轮   | Sprocket, timing(110cc)          | 1              |              |
| 10-1          | 01.03.01.03-1     | 正时主动链轮   | Sprocket, timing(50cc)           | 1              |              |
| 11            | 01.03.01.01       | 半圆键      | Key, woodruff(110cc)             | 1              |              |
| 11-1          | 01.03.01.01-1     | 半圆键      | Key, woodruff(50cc)              | 1              |              |
| 12            | D304 GB276-82     | 轴承 6304  | Bearing, radial ball 6304(110cc) | 2              |              |
| 12-1          | D304 GB276-82-1   | 轴承       | Bearing, radial ball(50cc)       | 2              |              |
| 13            | 9243/23.1         | 滚针轴承     | Needle bearing(110cc)            | 1              |              |
| 13-1          | 9243/23.1-1       | 滚针轴承     | Needle bearing(50cc)             | 1              |              |



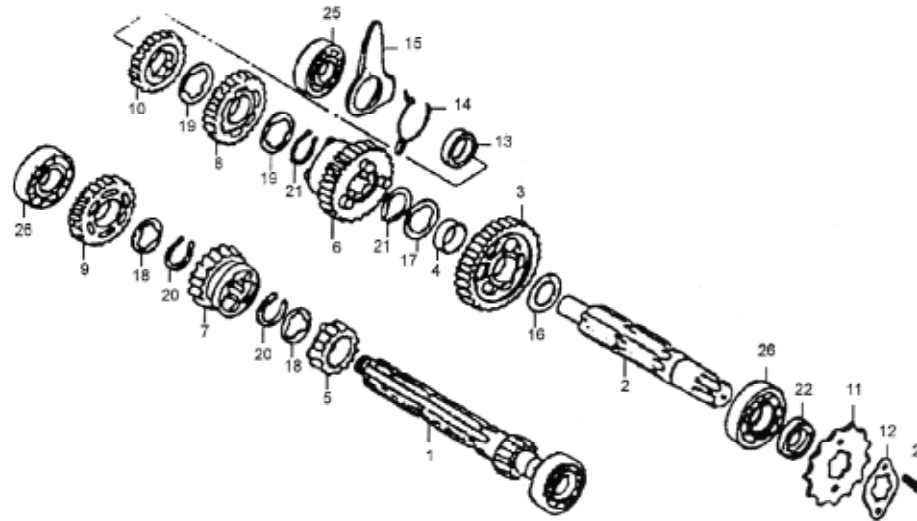
E-13 主轴、副轴 (MAINSHAFT、COUNTERSHAFT)



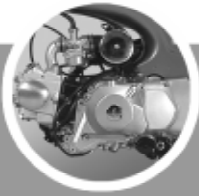
| 序号<br>Ref.No. | 零部件代号<br>Part No. | 零部件名称及规格  | Part Name And Standard       | 数量<br>Quantity | 备注<br>Remark |
|---------------|-------------------|-----------|------------------------------|----------------|--------------|
| 1             | 01.06.02.02       | 主轴        | Mainshaft                    | 1              |              |
| 2             | 07.06.01.05       | 副轴        | Countershaft                 | 1              |              |
| 3             | 07.06.01.02       | 副轴 一档齿轮   | Gear, countershaft low       | 1              |              |
| 4             | 07.06.01.01       | 衬套 20 × 9 | Bush, 20x9                   | 1              |              |
| 5             | 07.06.02.03       | 主轴二挡齿轮    | Gear, mainshaft second       | 1              |              |
| 6             | 07.06.01.04       | 副轴二挡齿轮    | Gear, countershaft second    | 1              |              |
| 7             | 07.06.02.04       | 主轴三挡齿轮    | Gear, mainshaft third        | 1              |              |
| 8             | 07.06.01.08       | 副轴三挡齿轮    | Gear, countershaft third     | 1              |              |
| 9             | 07.06.02.05       | 主轴四挡齿轮    | Gear, mainshaft fourth       | 1              |              |
| 10            | 07.06.01.10       | 副轴四挡齿轮    | Gear, countershaft fourth    | 1              |              |
| 11            | 01.06.00.01       | 主动链轮(15齿) | Sprocket, drive(110cc, Z=15) | 1              |              |
| 11-1          | 01.06.00.01-1     | 主动链轮(13齿) | Sprocket, drive(50cc, Z=13)  | 1              |              |
| 12            | 01.06.00.02       | 固定板       | Plate, drive sprocket fixing | 1              |              |
| 13            | 07.06.01.14       | 衬套        | Bush                         | 1              |              |
| 14            | 07.06.01.11       | 卡簧        | Spring                       | 1              |              |



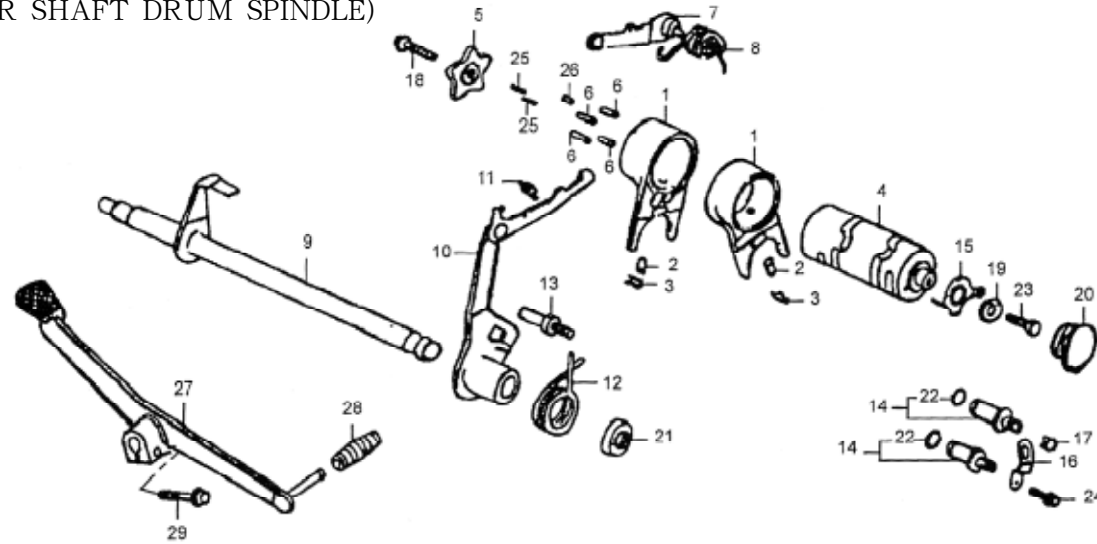
E-13 主轴、副轴 (MAINSHAFT、COUNTERSHAFT)



| 序号<br>Ref.No. | 零部件代号<br>Part No. | 零部件名称及规格       | Part Name And Standard    | 数量<br>Quantity | 备注<br>Remark |
|---------------|-------------------|----------------|---------------------------|----------------|--------------|
| 15            | 07.06.01.12       | 限位板            | Stopper                   | 1              |              |
| 16            | 07.06.01.13       | 止推垫圈 17mm      | Washer, thrust, 17mm      | 1              |              |
| 17            | 07.06.01.07       | 花键垫圈 20mm      | Washer, spline, 20mm      | 1              |              |
| 18            | 01.06.01.03       | 花键垫圈 17mm      | Washer, spline, 17mm      | 2              |              |
| 19            | 07.06.01.07       | 花键垫圈 20mm      | Washer, spline, 20mm      | 2              |              |
| 20            | 01.06.01.06       | 挡圈 17mm        | Cir clip, 17mm            | 2              |              |
| 21            | 07.06.01.06       | 挡圈 20mm        | Cir clip, 20mm            | 2              |              |
| 22            | 01.04.14.00       | 油封 17 × 29 × 5 | Oil seal 17x29x5          | 1              |              |
| 23            | GB5782-86         | 螺栓 M6 × 8      | Bolt hex 6x8              | 2              |              |
| 24            | GB276-82          | 轴承 6001        | Bearing, radial ball 6001 | 1              |              |
| 25            | GB276-82          | 轴承 6201        | Bearing, radial ball 6201 | 1              |              |
| 26            | GB276-82          | 轴承 6203        | Bearing, radial ball 6203 | 2              |              |



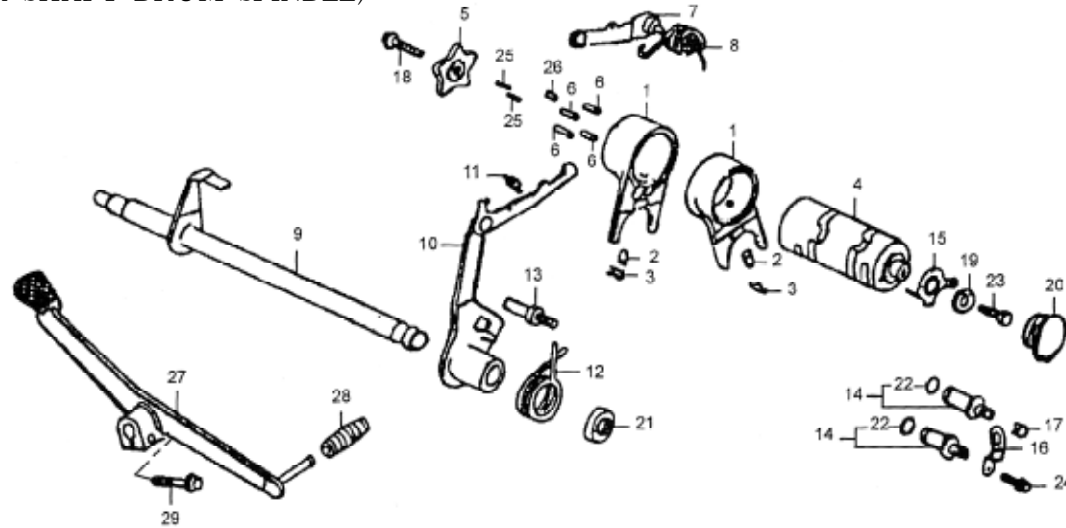
E-14 变速装置 (GEAR SHAFT DRUM SPINDLE)



| 序号<br>Ref.No. | 零部件代号<br>Part No. | 零部件名称及规格 | Part Name And Standard         | 数量<br>Quantity | 备注<br>Remark |
|---------------|-------------------|----------|--------------------------------|----------------|--------------|
| 1             | 01.06.04.04       | 变速拨叉     | Fork, gearshift                | 2              |              |
| 2             | 01.06.04.01       | 导向销      | Pin, gearshift fork guide      | 2              |              |
| 3             | 01.06.04.03       | 卡簧       | Clip, gearshift fork guide pin | 2              |              |
| 4             | 07.06.04.02       | 变速凸轮轴    | Drum, gearshift                | 1              |              |
| 5             | 07.06.04.06       | 定位挡板     | Plate, gearshift drum stopper  | 1              |              |
| 6             | 07.06.00.03       | 拨销       | Pin, gearshift drum            | 4              |              |
| 7             | 07.04.03.00       | 定位轮组件    | Stopper comp, gearshift drum   | 1              |              |
| 8             | 07.04.00.03       | 定位轮回位弹簧  | Sping, gearshift drum stopper  | 1              |              |
| 9             | 07.07.01.01       | 换挡轴      | Gearshift(110cc)               | 1              |              |
| 9-1           | 07.07.01.01-1     | 换挡轴      | Gearshift(50cc)                | 1              |              |
| 10            | 07.07.01.00       | 换挡臂      | Spindle comp, gearshift(110cc) | 1              |              |
| 10-1          | 07.07.01.00-1     | 换挡臂      | Spindle comp, gearshift(50cc)  | 1              |              |
| 11            | 01.07.01.06       | 换挡臂弹簧    | Spring, gearshift arm          | 1              |              |
| 12            | 01.07.01.07       | 换挡轴回位弹簧  | Spring, shift return spring    | 1              |              |
| 13            | 01.04.00.04       | 回位弹簧定位螺栓 | Pin, shift return spring       | 1              |              |
| 14            | 01.04.08.00       | 挡位开关组件   | Contact assy, switch           | 2              |              |



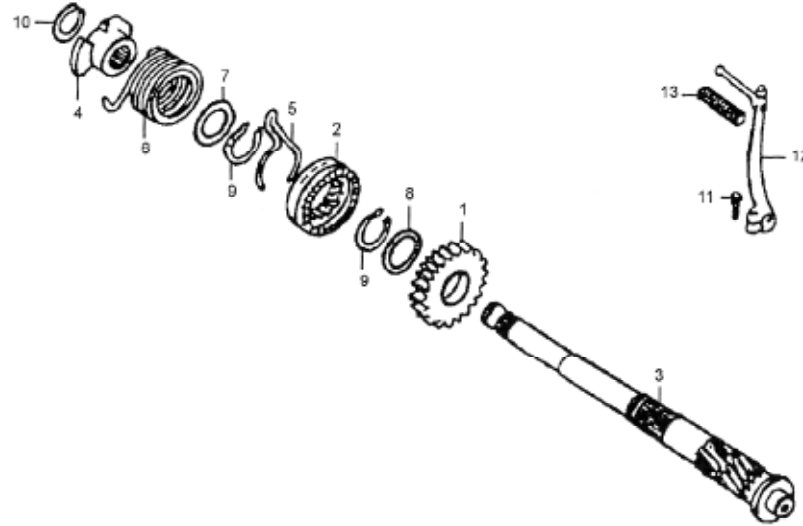
E-14 变速装置 (GEAR SHAFT DRUM SPINDLE)



| 序号<br>Ref.No. | 零部件代号<br>Part No. | 零部件名称及规格                      | Part Name And Standard      | 数量<br>Quantity | 备注<br>Remark |
|---------------|-------------------|-------------------------------|-----------------------------|----------------|--------------|
| 15            | 07.06.04.05       | 挡位开关接触片                       | Rotor switch                | 1              |              |
| 16            | 07.04.00.23       | 固定板                           | Plate, contact fixing       | 1              |              |
| 17            | 140099            | 挡位开关帽                         | Cap, switch                 | 1              |              |
| 18            | GB5787-86         | 螺栓 M6 × 16                    | Bolt, dowel, 6 × 16         | 1              |              |
| 19            | 01.04.00.05       | 垫圈                            | Washer, gearshift drum side | 1              |              |
| 20            | 01.04.00.22       | 橡胶螺栓                          | Plug, rubber                | 1              |              |
| 21            | 01.04.13.00       | 油封 11.6 × 24 × 10             | oil seal 11.6 × 24 × 10     | 1              |              |
| 22            | 01.04.08.01       | O形圈 7 × 1.7                   | O-ring 7 × 1.7              | 2              |              |
| 23            | GB5782-86         | 螺栓 M6 × 12                    | Bolt, hex, 6 × 16           | 1              |              |
| 24            | GB5782-86         | 凸缘螺栓 M6 × 12                  | Screw, flange, 6 × 12       | 1              |              |
| 25            | 140089            | 滚针 $\varnothing 3 \times 8.5$ | Roller, 3 × 8.5             | 2              |              |
| 26            | 140088            | 滚针 $\varnothing 4 \times 10$  | Roller, 4 × 10              | 1              |              |
| 27            | 07.07.02.00       | 变档划板                          | Pedal, gear change          | 1              |              |
| 28            | 140087            | 胶套                            | Rubber, change pedal        | 1              |              |
| 29            | GB5782-86         | 螺栓 M6 × 20                    | Bolt, hex, 6 × 20           | 1              |              |



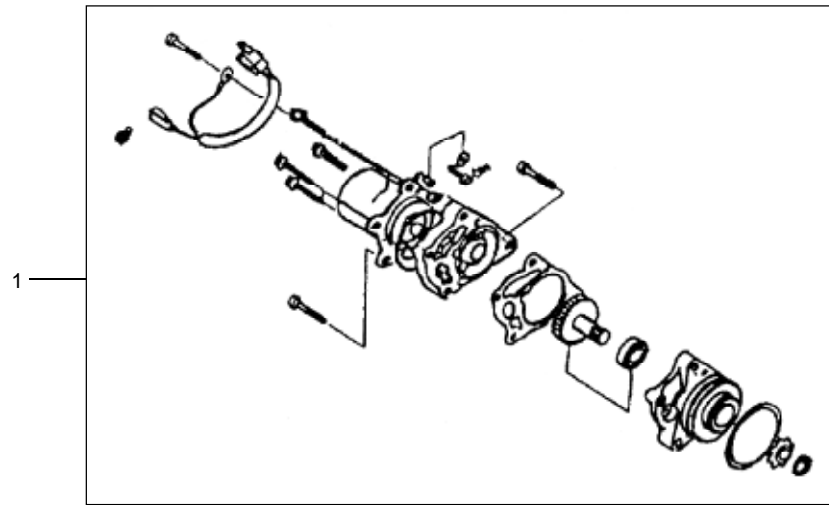
E-15 起动装置 (STARTER)



| 序号<br>Ref.No. | 零部件代号<br>Part No. | 零部件名称及规格  | Part Name And Standard       | 数量<br>Quantity | 备注<br>Remark |
|---------------|-------------------|-----------|------------------------------|----------------|--------------|
| 1             | 07.08.01.01       | 起动齿轮      | Gear, kick starter           | 1              |              |
| 2             | 01.08.01.03       | 起动棘轮      | Ratchet, kick starter        | 1              |              |
| 3             | 07.08.01.07       | 起动轴       | Spindle, kick starter        | 1              |              |
| 4             | 01.08.01.06       | 起动轴弹簧座    | Retainer, kick spring        | 1              |              |
| 5             | 07.08.01.13       | 起动齿轮卡弹簧   | Spring, kick starter ratchet | 1              |              |
| 6             | 07.08.01.05       | 起动轴回位弹簧   | Spring, kick starter         | 1              |              |
| 7             | 01.08.01.09       | 垫圈 17mm   | Washer, 17mm                 | 1              |              |
| 8             | 01.08.01.12       | 止推垫圈 20mm | washer, thrust,20mm          | 1              |              |
| 9             | 01.08.01.11       | 挡圈 20mm   | Cir clip 20mm                | 2              |              |
| 10            | 01.08.01.08       | 挡圈 16mm   | cir clip 16mm                | 1              |              |
| 11            | GB5782-86         | 螺栓 M6x22  | Bolt, hex, 6x22              | 1              |              |
| 12            | 07.08.02.00       | 起动踏杆      | Arm, kick starter            | 1              |              |
| 13            | 07.08.02.03       | 踏杆橡胶套     | Rubber, kick starter         | 1              |              |



E-16 起动电机 (MOTOR, STARTER)

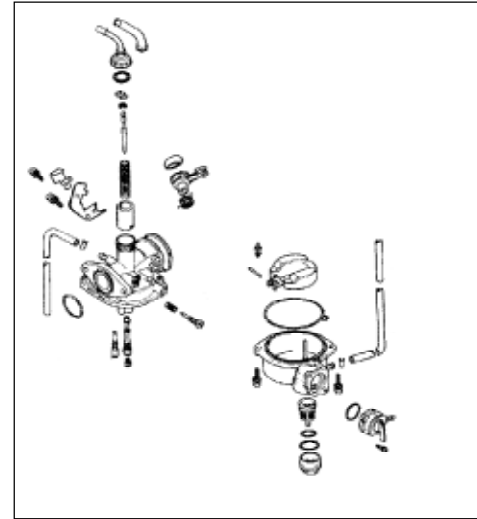
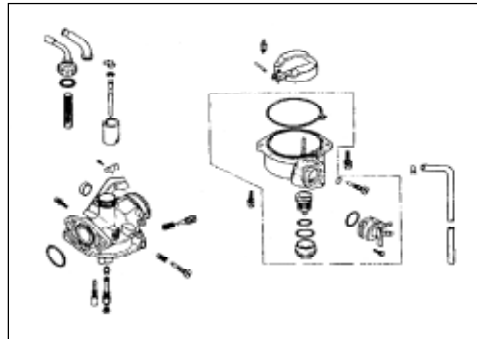


| 序号<br>Ref.No. | 零部件代号<br>Part No. | 零部件名称及规格 | Part Name And Standard | 数量<br>Quantity | 备注<br>Remark |
|---------------|-------------------|----------|------------------------|----------------|--------------|
| 1             | 02.12.00.00       | 起动电机总成   | Starting motor assy    | 1              |              |





E-17 化油器 (CARBURETOR COMP)



| 序号<br>Ref.No. | 零部件代号<br>Part No. | 零部件名称及规格 | Part Name And Standard | 数量<br>Quantity | 备注<br>Remark |
|---------------|-------------------|----------|------------------------|----------------|--------------|
| 1             | 13200-14A00       | 化油器      | CARBURETOR(50cc)       | 1              |              |
| 2             | 13200-14G00       | 化油器      | CARBURETOR(110cc)      | 1              |              |

**ST50-8 ST50-8A ST110-8 ST110-8A**



**PARTS CATALOGUE — VEHICLE**



**SKYTEAM**

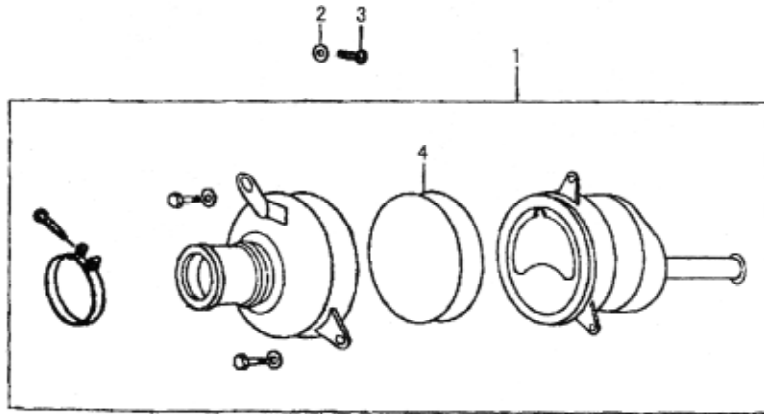
**ST50-8 ST50-8A ST110-8 ST110-8A**

**PARTS CATALOGUE — VEHICLE**

**CLEANER**

**FIG.1**

| 序号  | 件号                      | 英文名称                                 | 中文名称    | 数量 |
|-----|-------------------------|--------------------------------------|---------|----|
| 1   | 13700-15A00             | CLEANER ASSY, AIR(ST50-8, ST50-8A)   | 空气滤清器总成 | 1  |
| 1-1 | 13700-15G00             | CLEANER ASSY, AIR(ST110-8, ST110-8A) | 空气滤清器总成 | 1  |
| 2   | GB97.1-85 6-140HV-Zn.DC | WASHER                               | 垫圈      | 1  |
| 3   | GB5783-86 M6 x 12-Zn.DC | BOLT                                 | 螺栓      | 1  |
| 4   | 13701-15A00             | FILTER                               | 过滤器     | 1  |





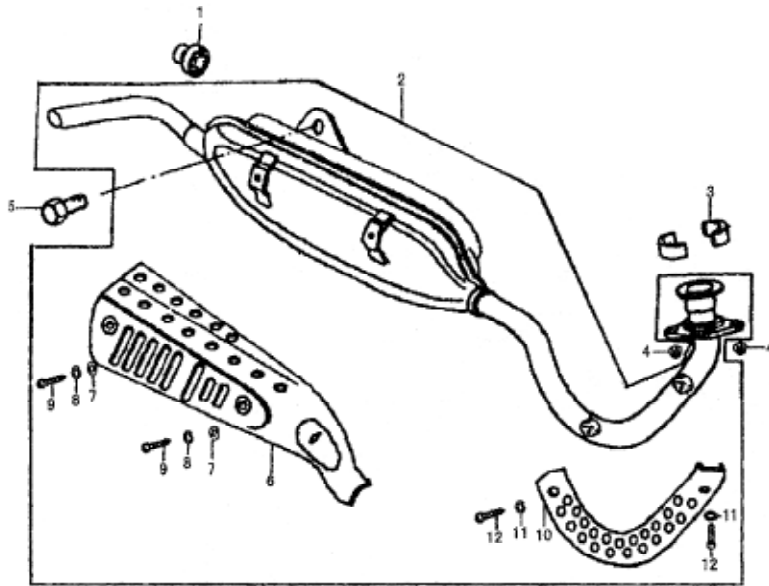
SKYTEAM

ST50-8 ST50-8A ST110-8 ST110-8A

PARTS CATALOGUE — VEHICLE

MUFFLER

FIG.2



| 序号  | 件号                      | 英文名称                            | 中文名称  | 数量 |
|-----|-------------------------|---------------------------------|-------|----|
| 1   | 14371-15A00             | RUBBER WASHER                   | 排气口胶套 | 1  |
| 2   | 14300-15A00             | MUFFLER ASSY(ST50-8, ST50-8A)   | 消声器总成 | 1  |
| 2-1 | 14300-15G00             | MUFFLER ASSY(ST110-8, ST110-8A) | 消声器总成 | 1  |
| 3   | 14811-15A00             | CLAMP                           | 卡箍    | 2  |
| 4   | GB6170-86 M6-Cr         | NUT                             | 螺母    | 2  |
| 5   | GB5787-86 M8 x 20-Zn.DB | BOLT                            | 螺栓    | 1  |
| 6   | 14301-15A00             | BIG PLATE                       | 大装饰板  | 1  |
| 7   | 14305-15A00             | WASHER                          | 垫圈    | 2  |
| 8   | GB93-87 6               | SPRING WASHER                   | 弹簧垫圈  | 2  |
| 9   | 14302-15A00             | SCREW                           | 螺钉    | 2  |
| 10  | 14303-15A00             | SMALL PLATE                     | 小装饰板  | 1  |
| 11  | 14304-15A00             | WASHER                          | 垫圈    | 2  |
| 12  | GB818-85 M5 x 8         | SCREW                           | 螺钉    | 2  |



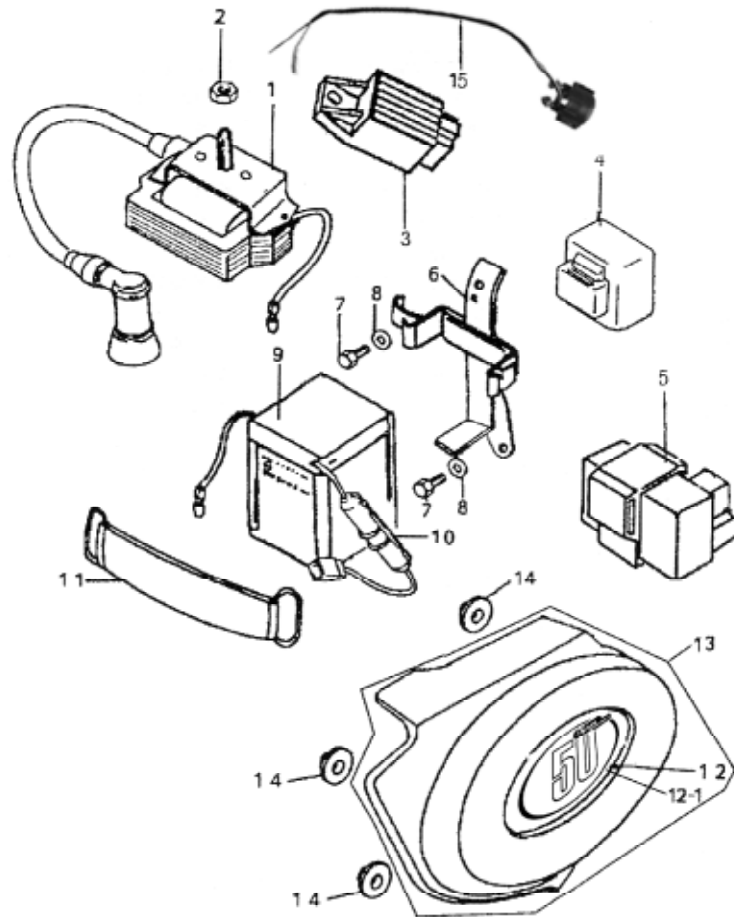
**SKYTEAM**

**ST50-8 ST50-8A ST110-8 ST110-8A**

**PARTS CATALOGUE — VEHICLE**

**FRAME COVER, ELECTRICAL**

**FIG.3**



| 序号   | 件号                      | 英文名称                           | 中文名称   | 数量 |
|------|-------------------------|--------------------------------|--------|----|
| 1    | 33400-15A00             | IGNITION COIL                  | 点火线圈   | 1  |
| 2    | GB6170-86M6 x 8-Zn.DB   | NUT                            | 螺母     | 1  |
| 3    | 32810-15A00             | RECTIFIER ASSY                 | 稳压整流器  | 1  |
| 4    | 38620-15A00             | RELAY ASSY, TURN SIGNAL        | 闪光继电器  | 1  |
| 5    | 32900-15A00             | CDI UNIT                       | 点火器    | 1  |
| 6    | 33610-15A00             | HOLDER, BATTERY                | 蓄电池架组件 | 1  |
| 7    | GB5783-86 M6 12-Zn.DC   | BOLT                           | 螺栓     | 2  |
| 8    | GB97.1-85 6-140HV-Zn.DC | WASHER                         | 垫圈     | 2  |
| 9    | 33610-15A00             | BATTERY                        | 蓄电池    | 1  |
| 10   | 37312-15A00             | FUSE                           | 保险丝    | 1  |
| 11   | 41520-15A00             | BAND, BATTERY                  | 攀带组件   | 1  |
| 12   | 68210-15A00             | TAPE                           | 护板贴花   | 1  |
| 12-1 | 68210-15A10             | TAPE                           | 护板贴花   | 1  |
| 13   | 47211-15A00             | SHIELD, LH                     | 左护罩    | 1  |
| 14   | 47221-15A00             | SEAL                           | 橡胶圈    | 3  |
| 15   | 31800-15A00             | RELAY ASSY., ELEC. START MODEL | 启动继电器  | 1  |



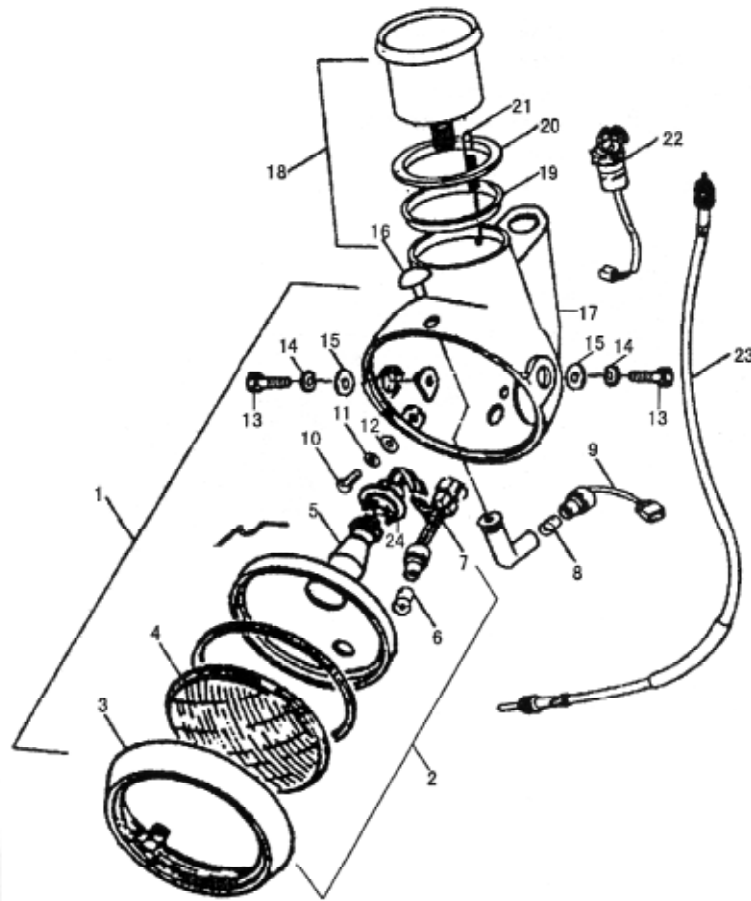
SKYTEAM

ST50-8 ST50-8A ST110-8 ST110-8A

PARTS CATALOGUE — VEHICLE

HEADLAMP, SPEEDOMETER

FIG.4



| 序号   | 件号                      | 英文名称                           | 中文名称    | 数量 |
|------|-------------------------|--------------------------------|---------|----|
| 1    | 35100-15A00             | HEADLIGHT ASSY                 | 前大灯总成   | 1  |
| 2    | 35120-15A00             | HEADLIGHT(EXCEPT THE COVER)    | 前大灯灯头组件 | 1  |
| 3    | 35101-15A00             | RIM                            | 前框架     | 1  |
| 4    | 35102-15A00             | LAMP GLASS                     | 大灯玻璃    | 1  |
| 5    | G8120-NS125             | BULB                           | 灯泡      | 1  |
| 6    | G8120-NT403             | BULB                           | 灯泡      | 1  |
| 7    | 35106-15A00             | HOLDER                         | 灯座组件    | 1  |
| 8    | G8120-NT403             | BULB                           | 灯泡      | 1  |
| 9    | 35108-15A00             | HOLDER                         | 灯座组件    | 1  |
| 10   | GB823-88 M414-Zn.DB     | SCREW                          | 螺钉      | 2  |
| 11   | GB93-87 4-Y-Zn.DB       | SPRING WASHER                  | 弹簧垫圈    | 2  |
| 12   | GB97-1-85 4-Zn.DB       | WASHER                         | 垫圈      | 2  |
| 13   | GB5785-86 M8 x 25-Zn.DB | BOLT                           | 螺栓      | 2  |
| 14   | GB93-87 8-Y-Zn.DB       | SPRING WASHER                  | 弹簧垫圈    | 2  |
| 15   | GB9701-85 8-Zn.DB       | WASHER                         | 垫圈      | 2  |
| 16   | 35109-15A00             | PILOT LENS                     | 指示镜     | 1  |
| 17   | 35130-15A00             | HEADLIGHT COVER                | 前大灯罩壳组件 | 1  |
| 18   | 34100-15G00             | SPEEDOMETER(ST110-8, ST110-8A) | 车速里程表   | 1  |
| 18-1 | 34100-15A00             | SPEEDOMETER(ST50-8, ST50-8A)   | 车速里程表   | 1  |
| 19   | 34101-15A00             | SET RING                       | 卡圈      | 1  |
| 20   | 34102-15A00             | RUBBER PAD                     | 橡胶垫     | 1  |
| 21   | 34103-15A00             | SPRING                         | 弹簧      | 1  |
| 22   | 46700-15A00             | SWITCH ASSY, IGNITION          | 电锁      | 1  |
| 23   | 34900-15A00             | CABLE, SPEEDOMETER             | 里程表软轴   | 1  |
| 24   | 35110-15A00             | LAMP HOLDER                    | 大灯灯座    | 1  |



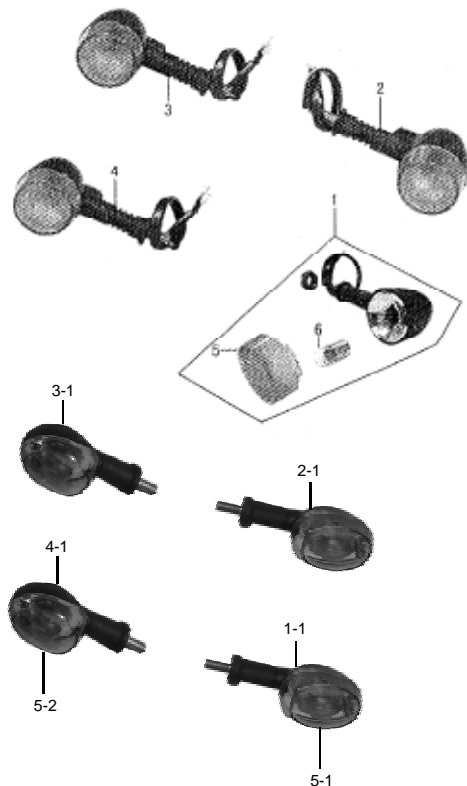
SKYTEAM

ST50-8 ST50-8A ST110-8 ST110-8A

PARTS CATALOGUE — VEHICLE

TURN SIGNAL LAMP

FIG.5



| 序号  | 件号          | 英文名称                 | 中文名称   | 数量 |
|-----|-------------|----------------------|--------|----|
| 1   | 35300-15A00 | LAMP ASSY, FRONT, LH | 前左转向灯  | 1  |
| 1-1 | 35300-15A10 | LAMP ASSY, FRONT, LH | 前左转向灯  | 1  |
| 2   | 35500-15A00 | LAMP ASSY, REAR, RH  | 后右转向灯  | 1  |
| 2-1 | 35300-15A10 | LAMP ASSY, REAR, RH  | 后右转向灯  | 1  |
| 3   | 35400-15A00 | LAMP ASSY, REAR, LH  | 后左转向灯  | 1  |
| 3-1 | 35400-15A10 | LAMP ASSY, REAR, LH  | 后左转向灯  | 1  |
| 4   | 35200-15A00 | LAMP ASSY, FRONT, RH | 前右转向灯  | 1  |
| 4-1 | 35400-15A10 | LAMP ASSY, FRONT, RH | 前右转向灯  | 1  |
| 5   | 35201-15A00 | LENS                 | 转向灯罩壳  | 4  |
| 5-1 | 35201-15A10 | LENS, LH             | 左转向灯罩壳 | 2  |
| 5-2 | 35201-15A20 | LENS, RH             | 右转向灯罩壳 | 2  |
| 6   | GB120-GR100 | BULB                 | 灯泡     | 4  |



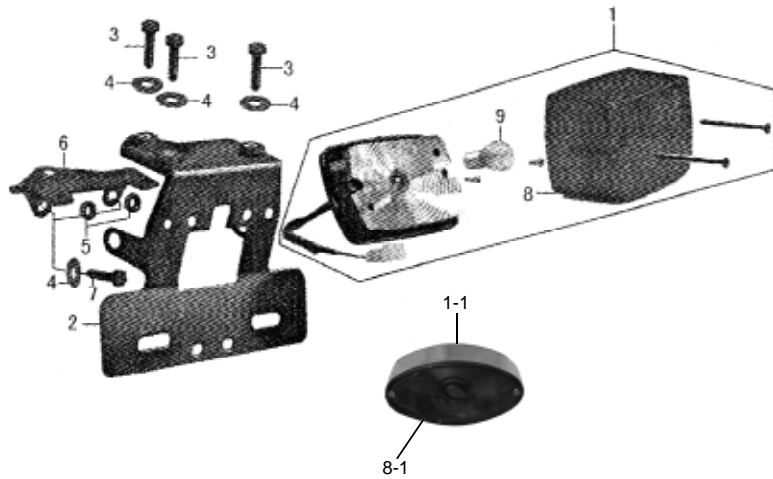
**SKYTEAM**

**ST50-8 ST50-8A ST110-8 ST110-8A**

**PARTS CATALOGUE — VEHICLE**

**TAIL LAMP**

**FIG.6**



| 序号  | 件号                      | 英文名称               | 中文名称   | 数量 |
|-----|-------------------------|--------------------|--------|----|
| 1   | 35700-15A00             | LAMP ASSY, TAIL    | 尾灯总成   | 1  |
| 1-1 | 35700-15A10             | LAMP ASSY, TAIL    | 尾灯总成   | 1  |
| 2   | 46500-15A00             | HOLDER, TAIL LAMP  | 尾灯支架组件 | 1  |
| 3   | GB5783-86 M625-Zn.DJ    | BOLT               | 螺栓     | 3  |
| 4   | GB96-85 6-140HV-Zn.DJ   | WASHER             | 垫圈     | 5  |
| 5   | 08319-31103             | NUT                | 螺母     | 2  |
| 6   | 46511-15A00             | REAR LIGHT BRACKER | 尾灯托板架  | 1  |
| 7   | GB5783-86 M6 x 16-Zn.DJ | BOLT               | 螺栓     | 2  |
| 8   | 35701-15A00             | LENS, TAIL         | 尾灯罩壳   | 1  |
| 8-1 | 35701-15A10             | LENS, TAIL         | 尾灯罩壳   | 1  |
| 9   | G8120-GP215             | BULB               | 灯泡     | 1  |





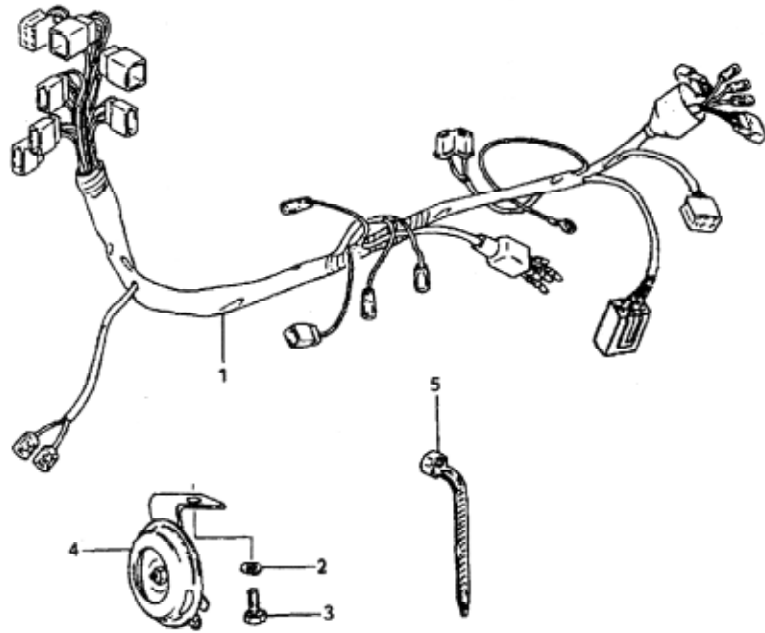
*SKYTEAM*

ST50-8 ST50-8A ST110-8 ST110-8A

PARTS CATALOGUE — VEHICLE

**WIRING HARNESS**

**FIG.7**



| 序号 | 件号                    | 英文名称           | 中文名称  | 数量 |
|----|-----------------------|----------------|-------|----|
| 1  | 36600-15A00           | WIRING HARNESS | 导线束总成 | 1  |
| 2  | GB859-876-Zn.DJ       | SPRING WASHER  | 弹簧垫圈  | 1  |
| 3  | GB30-76 M6 x 12-Zn.DJ | BOLT           | 螺栓    | 1  |
| 4  | 38500-15A00           | HORN ASSY      | 喇叭    | 1  |
| 5  | 36611-15A00           | CLAMP          | 导线固定带 | 4  |



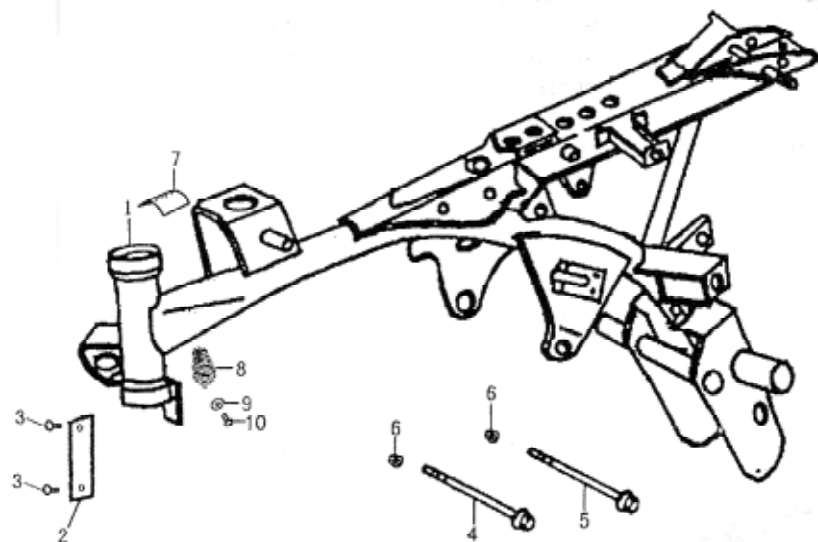
*SKYTEAM*

ST50-8 ST50-8A ST110-8 ST110-8A

PARTS CATALOGUE — VEHICLE

FRAME

FIG.8



| 序号 | 件号                    | 英文名称                 | 中文名称  | 数量 |
|----|-----------------------|----------------------|-------|----|
| 1  | 41100-15A00           | FRAME                | 车架    | 1  |
| 2  | 68101-15A00           | NAME PLATE           | 铭牌    | 1  |
| 3  | GB827-86 2 x 5        | RIVET                | 铆钉    | 4  |
| 4  | 09112-15A00           | BOLT                 | 螺栓    | 1  |
| 5  | 09099-15A00           | BOLT                 | 螺栓    | 1  |
| 6  | 08319-31083           | NUT                  | 螺母    | 2  |
| 7  | 68712-15A00           | ANTI-TEMPERING PLATE | 防改装标牌 | 1  |
| 8  | 37110-15A00           | STEERING LOCK ASSY   | 车头锁   | 1  |
| 9  | GB96-85 5-140HV-Zn.DJ | WASHER               | 大垫圈   | 1  |
| 10 | GB827-88 4 x 8-Zn.DB  | RIVET                | 铆钉    | 1  |



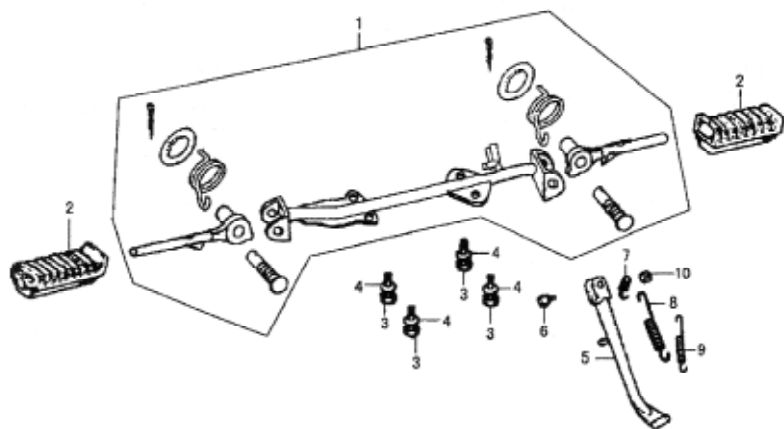
SKYTEAM

ST50-8 ST50-8A ST110-8 ST110-8A

PARTS CATALOGUE — VEHICLE

FOOTREST, BAR STAND

FIG.9



| 序号 | 件号                        | 英文名称                | 中文名称    | 数量 |
|----|---------------------------|---------------------|---------|----|
| 1  | 43510-15A00               | BAR, FRONT FOOTREST | 前脚踏支架组件 | 1  |
| 2  | 43551-15A00               | RUBBER              | 前脚踏皮    | 2  |
| 3  | GB5783-86 M8 x 20-Zn.DC   | BOLT                | 螺栓      | 4  |
| 4  | GB859-87 8-Zn.DC          | SPRING WASHER       | 弹簧垫圈    | 4  |
| 5  | 42310-15A00               | STAND, PROP         | 单撑组件    | 1  |
| 6  | T011-10002                | BOLT                | 螺栓      | 1  |
| 7  | 42321-15A00               | HOOK                | 挂片      | 1  |
| 8  | 42322-15A00               | SPRING              | 拉簧 I    | 1  |
| 9  | 42323-15A00               | SPRING              | 拉簧 II   | 1  |
| 10 | GB889-86 M10 x 1.25-Zn.DJ | NUT                 | 螺母      | 1  |



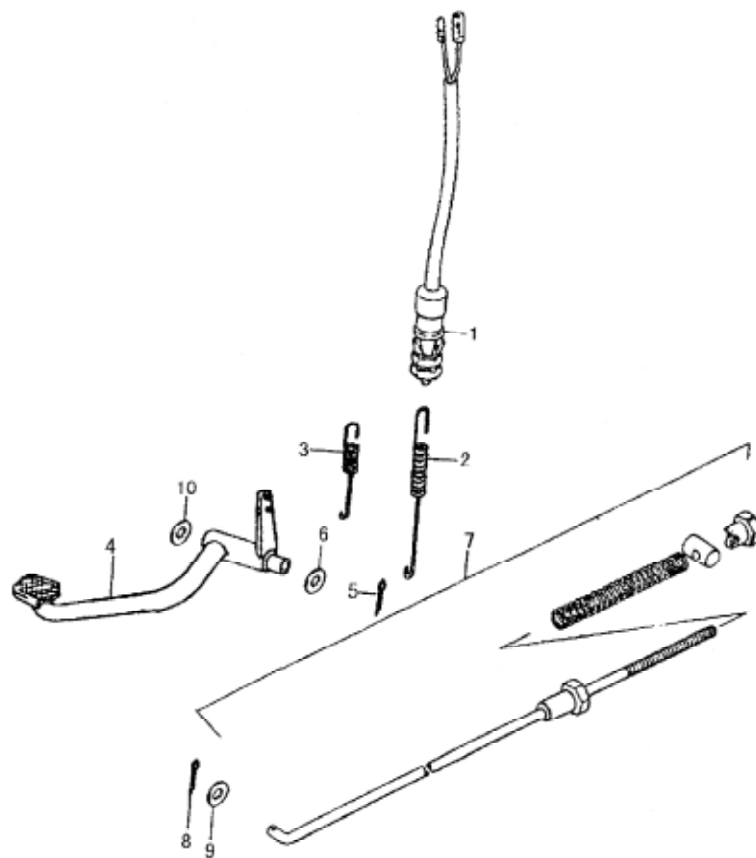
*SKYTEAM*

ST50-8 ST50-8A ST110-8 ST110-8A

PARTS CATALOGUE — VEHICLE

**PEDAL BRAKE**

**FIG.10**



| 序号 | 件号                      | 英文名称              | 中文名称   | 数量 |
|----|-------------------------|-------------------|--------|----|
| 1  | 37740-15A00             | BRAKE, SWITCHASSY | 后刹开关   | 1  |
| 2  | 37741-15A00             | SPRING            | 刹车弹簧   | 1  |
| 3  | 43322-15A00             | SPRING            | 拉簧     | 1  |
| 4  | 43110-15A00             | BRAKE PEDAL       | 制动踏板组件 | 1  |
| 5  | GB91-86 3 x 26-Zn.DB    | COTTER PIN        | 开口销    | 1  |
| 6  | 09160-15A00             | WASHER            | 垫圈     | 1  |
| 7  | 43310-15A00             | BRAKE ROD         | 制动拉杆组件 | 1  |
| 8  | GB91-86 1.6 x 16-Zn.DB  | COTTER PIN        | 开口销    | 1  |
| 9  | GB97.1-85 5-140HV-Zn.DB | WASHER            | 垫圈     | 1  |
| 10 | GB/T 97.3 14-Zn.DC      | WASHER            | 垫圈     | 1  |



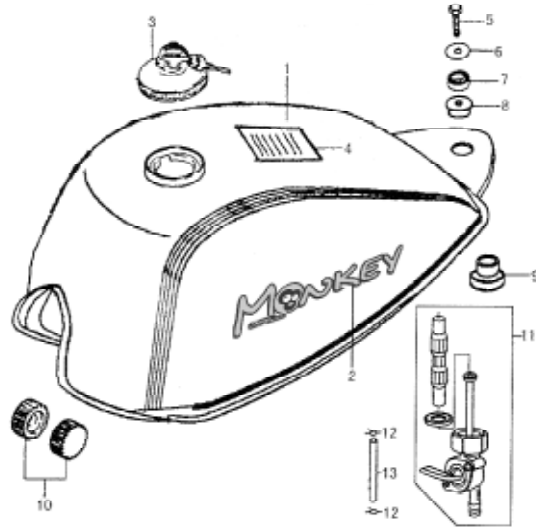
SKYTEAM

ST50-8 ST50-8A ST110-8 ST110-8A

PARTS CATALOGUE — VEHICLE

FUEL TANK

FIG.11



| 序号  | 件号                      | 英文名称                 | 中文名称   | 数量 |
|-----|-------------------------|----------------------|--------|----|
| 1   | 44110-15A00             | FUEL TANK ASSY       | 油箱组件   | 1  |
| 1-1 | 44110-15A10             | FUEL TANK ASSY       | 油箱组件   | 1  |
| 2   | 68110-15A00             | FUEL TANK TAPE       | 油箱贴花   | 2  |
| 2-1 | 68110-15A10             | FUEL TANK TAPE       | 油箱贴花   | 2  |
| 3   | 37300-15A00             | FUEL TANK CAP        | 油箱盖    | 1  |
| 4   | 68121-15A00             | WARNING TAPE         | 警告贴花   | 1  |
| 5   | GB5783-86 M6 x 25-Zn.DB | BOLT                 | 螺栓     | 1  |
| 6   | 09116-06078-1Z          | WASHER               | 垫圈     | 1  |
| 7   | 44415-15A00             | BUSHING              | 衬套     | 1  |
| 8   | 44414-15A00             | CUSHION              | 后安装座上套 | 1  |
| 9   | 44416-15A00             | CUSHION              | 后安装座下座 | 1  |
| 10  | 44413-15A00             | CUSHION, FRONT       | 前安装座   | 2  |
| 11  | 44300-15A00             | COCK ASSY, FUEL TANK | 油箱开关   | 1  |
| 12  | 09401-15A00             | SET RING             | 卡子     | 2  |
| 13  | 44412-15A00             | OIL HOSE             | 油管     | 1  |



*SKYTEAM*

ST50-8 ST50-8A ST110-8 ST110-8A

PARTS CATALOGUE — VEHICLE

**SEAT**

**FIG.12**

| 序号  | 件号          | 英文名称                    | 中文名称 | 数量 |
|-----|-------------|-------------------------|------|----|
| 1   | 45100-15A00 | SEAT(ST50-8, ST110-8)   | 座垫   | 1  |
| 1-1 | 45100-15A20 | SEAT(ST50-8A, ST110-8A) | 座垫   | 1  |
| 2   | 08319-31083 | NUT                     | 螺母   | 1  |
| 3   | 45411-15A00 | BOLT                    | 螺栓   | 1  |





SKYTEAM

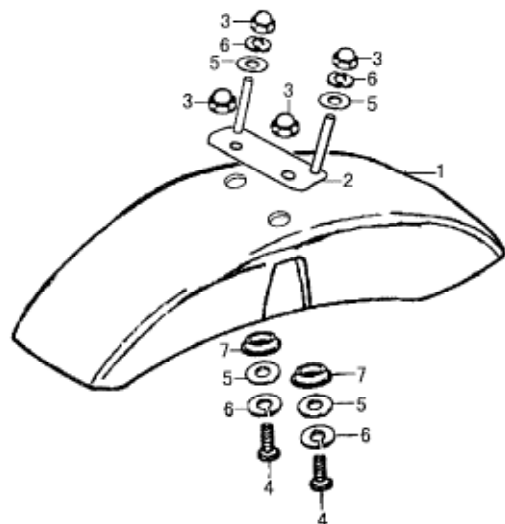
ST50-8 ST50-8A ST110-8 ST110-8A

PARTS CATALOGUE — VEHICLE

FENDER FRONT

FIG.13

| 序号 | 件号                      | 英文名称             | 中文名称  | 数量 |
|----|-------------------------|------------------|-------|----|
| 1  | 53411-15A00             | FENDER, FRONT    | 前挡泥板  | 1  |
| 2  | 51520-15A00             | CONNECTION BOARD | 连接板组件 | 1  |
| 3  | GB923-88 M6-Zn.DJ       | NUT              | 螺母    | 4  |
| 4  | GB5783-86 M6 x 16-Zn.DJ | BOLT             | 螺栓    | 2  |
| 5  | GB97.1-85 6-140HV-Zn.DJ | WASHER           | 垫圈    | 4  |
| 6  | GB859-87 6-Zn.DJ        | SPRING WASHER    | 弹簧垫圈  | 4  |
| 7  | 53111-15A00             | BUSHING          | 衬套    | 2  |









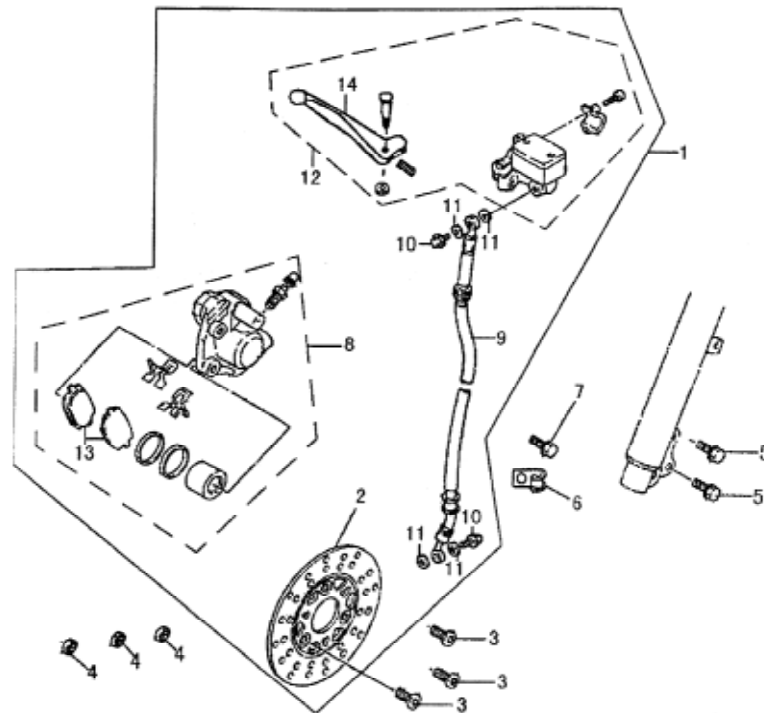
SKYTEAM

ST50-8 ST50-8A ST110-8 ST110-8A

PARTS CATALOGUE — VEHICLE

BRAKE ASSY, FRONT

FIG.15



| 序号 | 件号                      | 英文名称             | 中文名称      | 数量 |
|----|-------------------------|------------------|-----------|----|
| 1  | 59000-15A00             | FRONT BRAKE ASSY | 前轮盘式制动器总成 | 1  |
| 2  | 59411-15A00             | BRAKE DISC       | 制动盘       | 1  |
| 3  | 59421-15A00             | SCREW            | 螺钉        | 3  |
| 4  | 08319-31083             | NUT              | 螺母        | 3  |
| 5  | GB5787-86 M8 x 30-Zn,DJ | BOLT             | 螺栓        | 2  |
| 6  | 59489-15A00             | SET RING         | 卡子        | 1  |
| 7  | GB5787-86 M610-Zn,DJ    | BOLT             | 螺栓        | 1  |
| 8  | 59300-15A00             | CALIPER ASSY     | 制动钳组件     | 1  |
| 9  | 59480-15A00             | BRAKE PIPE       | 制动管组件     | 1  |
| 10 | 09360-15A00             | BOLT             | 油嘴螺栓      | 2  |
| 11 | 09161-15A00             | WASHER           | 垫圈        | 4  |
| 12 | 59600-15A00             | MASTER CYLINDER  | 前刹车主泵组件   | 1  |
| 13 | 59370-15A00             | PAD SET          | 制动片组件     | 1  |
| 14 | 57421-15A00             | LEVER, BRAKE     | 前制动手柄     | 1  |



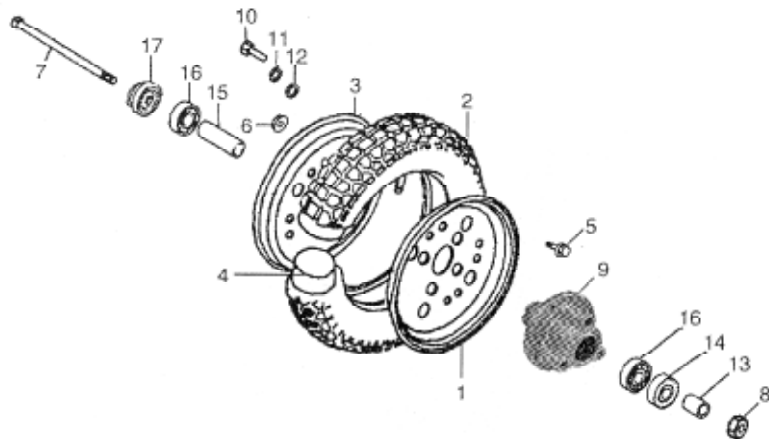
**SKYTEAM**

**ST50-8 ST50-8A ST110-8 ST110-8A**

**PARTS CATALOGUE — VEHICLE**

**FRONT WHEEL**

**FIG.16**



| 序号 | 件号                      | 英文名称                       | 中文名称   | 数量 |
|----|-------------------------|----------------------------|--------|----|
| 1  | 55301-15A00             | RIM, WHEEL, RH             | 轮辋右件   | 1  |
| 2  | 55100-15A00             | TIRE                       | 外胎     | 1  |
| 3  | 55302-15A00             | RIM, WHEEL, LH             | 轮辋左件   | 1  |
| 4  | 55200-15A00             | TUBE, INNER                | 内胎     | 1  |
| 5  | GB5787-86 M8 x 12-Zn.DJ | BOLT                       | 螺栓     | 8  |
| 6  | 08319-31083             | NUT                        | 螺母     | 8  |
| 7  | 54711-15A00             | AXLE, FRONT                | 前轮轴    | 1  |
| 8  | 08319-31108             | NUT                        | 螺母     | 1  |
| 9  | 54111-15A00             | RIM, FRONT WHEEL           | 前轮轮毂   | 1  |
| 10 | GB5783-86 M8 x 18-Zn.DJ | BOLT                       | 螺栓     | 4  |
| 11 | GB97.1-85 8-140HV-Zn.DJ | WASHER                     | 垫圈     | 4  |
| 12 | GB93-87 8-Zn.DJ         | SPRING WASHER              | 弹簧垫圈   | 4  |
| 13 | 54121-15A00             | BUSHING                    | 前轮衬套   | 1  |
| 14 | 09285-15A00             | GASKET                     | 前轮密封圈  | 1  |
| 15 | 54123-15A00             | BUSHING                    | 前轮中间衬套 | 1  |
| 16 | 60300 GB278-82          | BEARING                    | 轴承     | 2  |
| 17 | 54620-15A00             | GEAR BOX ASSY, SPEEDOMETER | 变速器组件  | 1  |



*SKYTEAM*

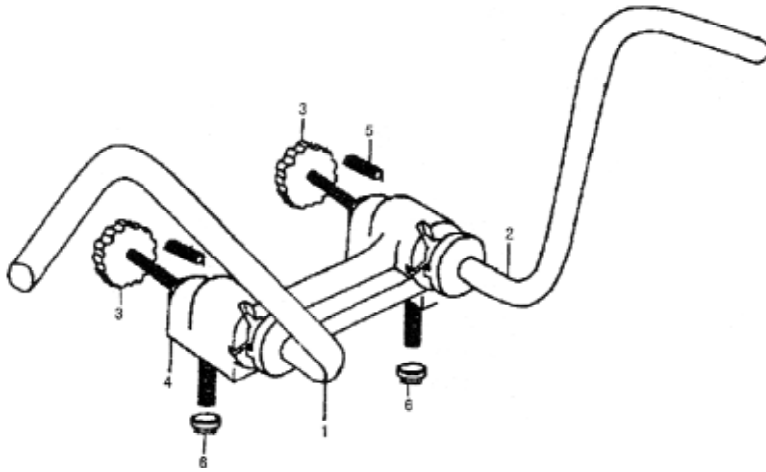
ST50-8 ST50-8A ST110-8 ST110-8A

PARTS CATALOGUE — VEHICLE

**HANLEBAR**

**FIG.17**

| 序号 | 件号          | 英文名称                     | 中文名称      | 数量 |
|----|-------------|--------------------------|-----------|----|
| 1  | 56110-15A00 | HANDLE BAR, LH           | 左方向把组件    | 1  |
| 2  | 56120-15A00 | HANDLE BAR, RH           | 右方向把组件    | 1  |
| 3  | 56130-15A00 | LOCKING COMP, HANDLE BAR | 方向把锁紧手柄组件 | 2  |
| 4  | 56140-15A00 | HOLDER, HANDLE BAR       | 方向把座组件    | 1  |
| 5  | 56141-15A00 | SPRING                   | 弹簧        | 2  |
| 6  | 08319-31103 | NUT                      | 螺母        | 2  |





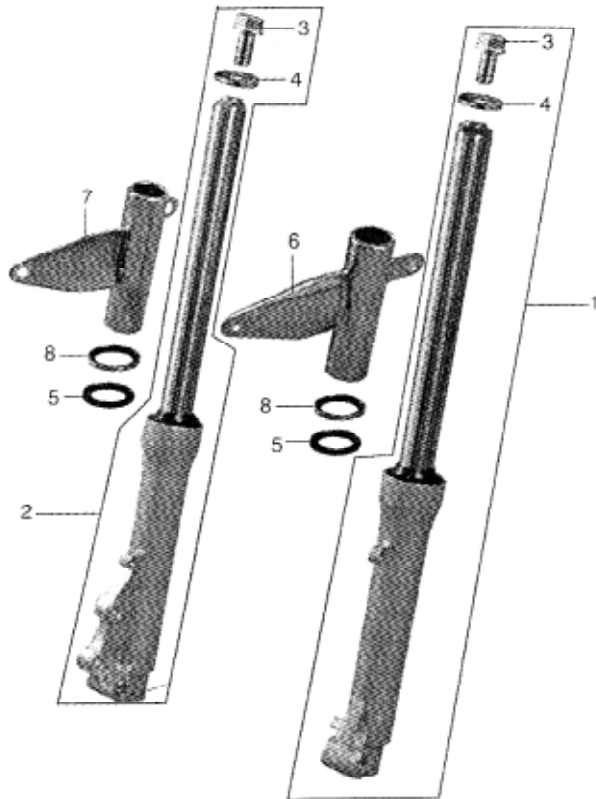
SKYTEAM

ST50-8 ST50-8A ST110-8 ST110-8A

PARTS CATALOGUE — VEHICLE

DAMPER

FIG.18



| 序号 | 件号          | 英文名称                  | 中文名称    | 数量 |
|----|-------------|-----------------------|---------|----|
| 1  | 52200-15A00 | DAMPER ASSY FRONT, LH | 左前减震器组件 | 1  |
| 2  | 52100-15A00 | DAMPER ASSY FRONT, RH | 右前减震器组件 | 1  |
| 3  | 51351-15A00 | BOLT                  | 螺栓      | 2  |
| 4  | 51356-15A00 | WASHER                | 垫圈      | 2  |
| 5  | 51552-15A00 | CUSHION               | 衬垫      | 2  |
| 6  | 51540-15A00 | HEADLIGHT HOLDER, LH  | 前大灯左支架  | 1  |
| 7  | 51530-15A00 | HEADLIGHT HOLDER, RH  | 前大灯右支架  | 1  |
| 8  | 51551-15A00 | HOLDER                | 座       | 2  |



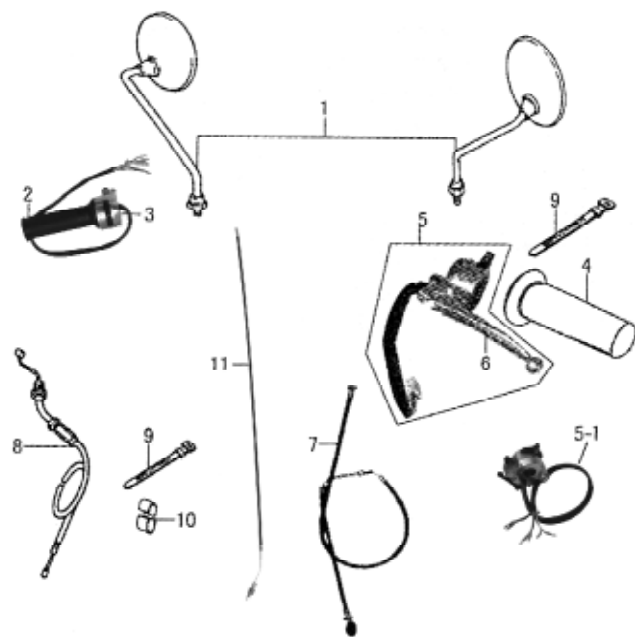
SKYTEAM

ST50-8 ST50-8A ST110-8 ST110-8A

PARTS CATALOGUE — VEHICLE

SWITCH, HANDLE

FIG.19



| 序号  | 件号                | 英文名称   | 中文名称      | 数量 |
|-----|-------------------|--|-----------|----|
| 1   | 56500-56600-15A00 | REAR VIEW MIRROR                                   | 后视镜组件     | 1  |
| 2   | 57110-15A00       | GRIP, THROTTLE                                     | 油门手把      | 1  |
| 3   | 57100-15A00       | RIGHT HANDLE SWITCH ASSY                           | 右把手开关组    | 1  |
| 4   | 57211-15A00       | GRIP, LH   | 左手把       | 1  |
| 5   | 57200-15A00       | LEFT HANDLE SWITCH ASSY<br>(MANUAL CLUTCH)         | 离合器及左开关组件 | 1  |
| 5-1 | 57200-15A10       | LEFT HANDLE SWITCH ASSY<br>(SEMI-AUTOMATIC CLUTCH) | 风门及左开关组件  | 1  |
| 6   | 57201-15A00       | HAND GRIP, CLUTCH(MANUAL CLUTCH)                   | 离合器手柄     | 1  |
| 7   | 58200-15A00       | CLUTCH THROTTLE ASSY(MANUAL CLUTCH)                | 离合器钢索组件   | 1  |
| 8   | 58300-15A00       | CABLE, THROTTLE                                    | 油门钢索组件    | 1  |
| 9   | 09407-12402       | BAND   | 导线束固定带    | 4  |
| 10  | 09408-00001       | CLIP   | 线夹        | 1  |
| 11  | 58410-15A00       | CABLE, CHOKE                                       | 风门线       | 1  |



SKYTEAM

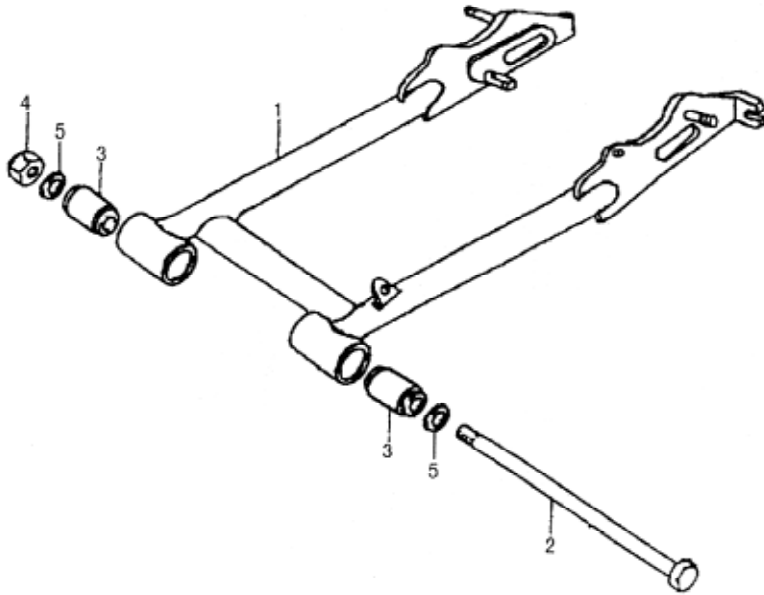
ST50-8 ST50-8A ST110-8 ST110-8A

PARTS CATALOGUE — VEHICLE

SWINGING ARM SET

FIG.20

| 序号 | 件号                 | 英文名称              | 中文名称    | 数量 |
|----|--------------------|-------------------|---------|----|
| 1  | 61100-15A00        | SWINGING ARM COMP | 后摇臂焊接组件 | 1  |
| 2  | 61201-15A00        | SHAFT             | 后摇臂轴    | 1  |
| 3  | 51120-15A00        | BUSHING           | 衬套组件    | 2  |
| 4  | 08319-31108        | NUT               | 螺母      | 1  |
| 5  | GB5287-85 10-100HV | WASHER            | 垫圈      | 2  |





*SKYTEAM*

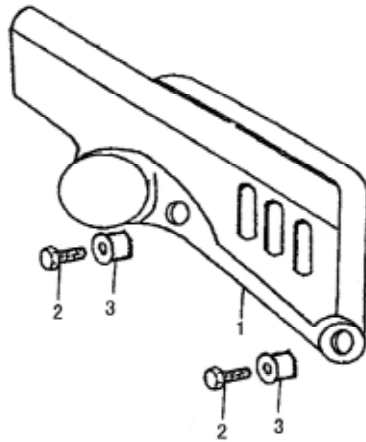
ST50-8 ST50-8A ST110-8 ST110-8A

PARTS CATALOGUE — VEHICLE

**CHAIN CASE**

**FIG.21**

| 序号 | 件号                     | 英文名称       | 中文名称 | 数量 |
|----|------------------------|------------|------|----|
| 1  | 61300-15A00            | CHAIN CASE | 链罩   | 1  |
| 2  | GB818-85 M6 x 12-Zn.DJ | SCREW      | 螺钉   | 2  |
| 3  | 53111-15A00            | BUSHING    | 衬套   | 2  |





SKYTEAM

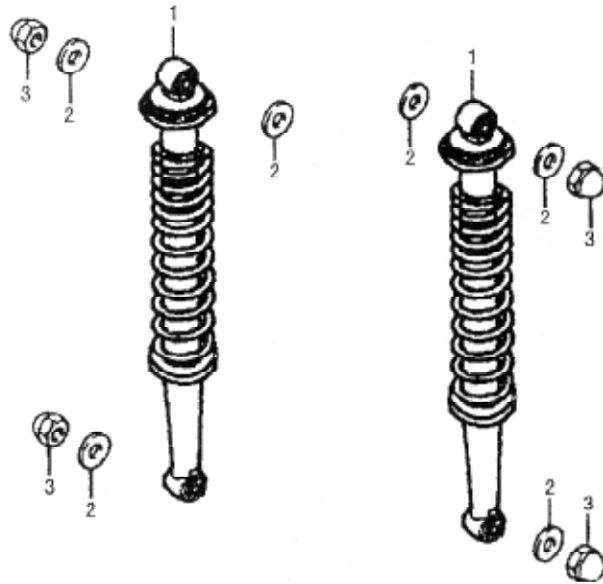
ST50-8 ST50-8A ST110-8 ST110-8A

PARTS CATALOGUE — VEHICLE

SHOCK ABSORBER

FIG.22

| 序号 | 件号                     | 英文名称                 | 中文名称   | 数量 |
|----|------------------------|----------------------|--------|----|
| 1  | 62100-15A00            | SHOCK ABSORBER, REAR | 后减震器总成 | 2  |
| 2  | 09160-10001            | WASHER               | 垫圈     | 6  |
| 3  | GB923-88 M10 x 1.25-Cr | NUT                  | 盖形螺母   | 4  |







SKYTEAM

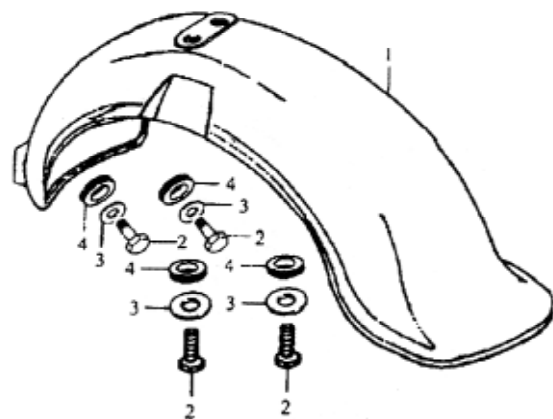
ST50-8 ST50-8A ST110-8 ST110-8A

PARTS CATALOGUE — VEHICLE

FENDER REAR

FIG.23

| 序号 | 件号                      | 英文名称         | 中文名称 | 数量 |
|----|-------------------------|--------------|------|----|
| 1  | 63511-15A00             | FENDER, REAR | 后挡泥板 | 1  |
| 2  | 63641-15A00             | BOLT         | 螺栓   | 4  |
| 3  | GB97.1-85 8-140HV-Zn.DC | WASHER       | 垫圈   | 4  |
| 4  | 63621-15A00             | RUBBER PAD   | 橡胶垫  | 4  |





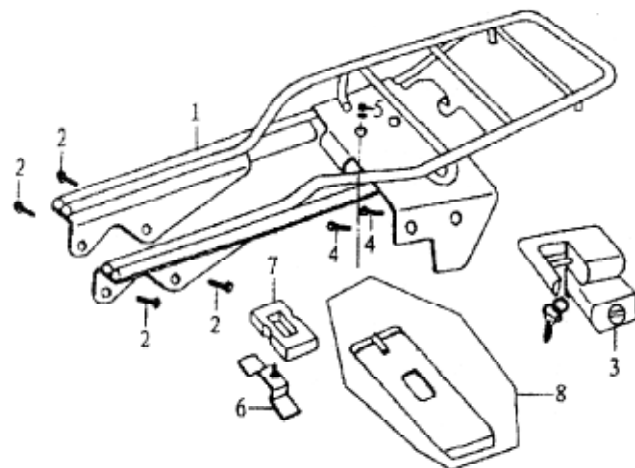
*SKYTEAM*

ST50-8 ST50-8A ST110-8 ST110-8A

PARTS CATALOGUE — VEHICLE

**CARRIER**

**FIG.24**



| 序号 | 件号                     | 英文名称             | 中文名称    | 数量 |
|----|------------------------|------------------|---------|----|
| 1  | 46300-15A00            | CARRIER, REAR    | 后架组件    | 1  |
| 2  | GB5787-86 M8 x 16-Cr   | BOLT             | 螺栓      | 4  |
| 3  | 37600-15A00            | LOCK, HELMET     | 头盔锁     | 1  |
| 4  | GB818-85 M6 x 10-Zn.DC | SCREW            | 螺钉      | 2  |
| 5  | GB923-88 M6-Zn.DJ      | NUT              | 螺母      | 1  |
| 6  | 46820-15A00            | PLATE COMP, TOOL | 工具箱吊装组件 | 1  |
| 7  | 46802-15A00            | CUSHION          | 减震垫     | 1  |
| 8  | 46830-15A00            | HOLDER, TOOL     | 工具箱组件   | 1  |



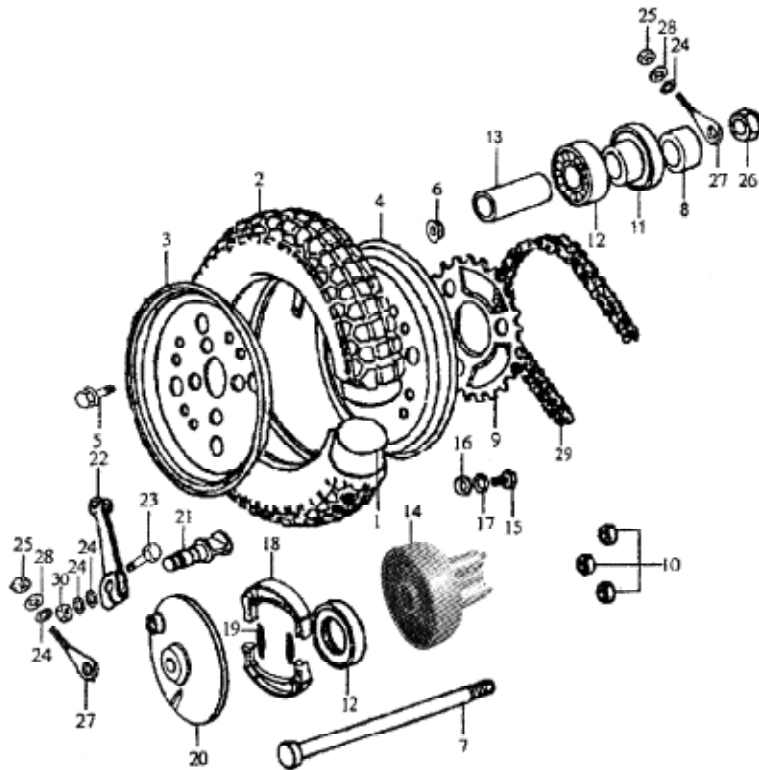
SKYTEAM

ST50-8 ST50-8A ST110-8 ST110-8A

PARTS CATALOGUE — VEHICLE

REAR WHEEL

FIG.25



| 序号   | 件号                      | 英文名称                              | 中文名称       | 数量 |
|------|-------------------------|-----------------------------------|------------|----|
| 1    | 55200-15A00             | TUBE, INNER                       | 内胎         | 1  |
| 2    | 55100-15A00             | TIRE                              | 外胎         | 1  |
| 3    | 55302-15A00             | RIM, WHEEL, LH                    | 轮辋左件       | 1  |
| 4    | 55301-15A00             | RIM, WHEEL, RH                    | 轮辋右件       | 1  |
| 5    | GB5787-86 M8 x 12-Zn.DJ | BOLT                              | 螺栓         | 8  |
| 6    | 08319-31083             | NUT                               | 螺母         | 8  |
| 7    | 64711-15A00             | REAR AXLE                         | 后轮轴        | 1  |
| 8    | 64712-15A00             | BUSHING                           | 衬套         | 1  |
| 9    | 64511-15A00             | SPROCKET, REAR(ST50-8, ST50-8A)   | 大链轮 (Z=40) | 1  |
| 9-1  | 64511-15G00             | SPROCKET, REAR(ST110-8, ST110-8A) | 大链轮 (Z=37) | 1  |
| 10   | 08319-31083             | NUT                               | 螺母         | 3  |
| 11   | 64720-15A00             | OIL SEAL                          | 油封组件       | 1  |
| 12   | 60201 GB278-82          | BEARING                           | 轴承         | 2  |
| 13   | 64210-15A00             | BUSHING                           | 衬套组件       | 1  |
| 14   | 64100-15A00             | HUB, REAR                         | 后轮毂组件      | 1  |
| 15   | GB5783-86 M8 x 18-Zn.DJ | BOLT                              | 螺栓         | 4  |
| 16   | GB97.1-85 8-140HV-Zn.DJ | WASHER                            | 垫圈         | 4  |
| 17   | GB93-87 8-Zn.DJ         | SPRING WASHER                     | 弹簧垫圈       | 4  |
| 18   | 54400-15A00             | SHOE, BRAKE                       | 制动蹄块组件     | 2  |
| 19   | 09443-15A00             | SPRING                            | 制动弹簧       | 2  |
| 20   | 54210-15A00             | PANEL                             | 毂盖组件       | 1  |
| 21   | 54441-15A00             | BRAKE CAM                         | 制动凸轮       | 1  |
| 22   | 64411-15A00             | LEVER, BRAKE CAM                  | 制动摇臂       | 1  |
| 23   | GB5782-86 M6 x 35-Zn.DJ | BOLT                              | 螺栓         | 1  |
| 24   | GB96-85 6-140HV-Zn.DJ   | WASHER                            | 垫圈         | 4  |
| 25   | GB6170-86 M6-8-Zn.DJ    | NUT                               | 螺母         | 2  |
| 26   | 08319-31128             | NUT                               | 螺母         | 1  |
| 27   | 61411-15A00             | ADJUSTER                          | 轮距调整接头     | 2  |
| 28   | GB859-87 6-Zn.DJ        | SPRING WASHER                     | 弹簧垫圈       | 2  |
| 29   | 08MA-80 GB/T14212-93    | CHAIN(ST50-8, ST50-8A)            | 链条         | 1  |
| 29-1 | 08MA-78 GB/T14212-93    | CHAIN(ST110-8, ST110-8A)          | 链条         | 1  |
| 30   | GB6170-86 M6-Zn.DJ      | NUT                               | 螺母         | 1  |



SKYTEAM

ST50-8 ST50-8A ST110-8 ST110-8A

PARTS CATALOGUE — VEHICLE

KIT

FIG.26

| 序号 | 件号          | 英文名称      | 中文名称 | 数量 |
|----|-------------|-----------|------|----|
| 1  | 09800-15A00 | TOOL KITS | 工具总成 | 1  |
| 2  | 09801-15A00 | BAG       | 工具袋  | 1  |

